

SONY



Healthcare & Scientific
Catalogue 2006

www.sonybiz.net/healthcare

The world is changing.

More than ever before, surgeons and other hospital staff depend on visual images to improve the quality and cost efficiency of patient care.

Today, we're in the middle of a revolution. The digital storage and distribution of images from radiological and other modalities is opening up new possibilities to diagnose and treat patients more effectively while driving down operational costs.

Visible light images are becoming an indispensable part of modern surgical practice. In the modern operating room, endoscopic cameras are the surgeon's 'eyes'. Capturing that information – whether it's still or moving images – is a vital enabler for improved diagnosis and treatment.

Hospitals are also embracing the power of networks to store, share and distribute this explosion of visual information. Successfully uniting this data with other hospital information and patient record systems demands a partner who understands not only the technology but the realities of today's hospital workflows.

Introduction

At Sony we've got more than twenty five years experience in helping organisations unlock the power of images, video and sound.

Drawing on our unmatched skills in networked video and media management, we offer a range of products that improve hospital workflows while benefiting the quality of patients' lives.

From high-end diagnostic film Imagers, CCD cameras, DICOM capture devices and LCD monitors to DVD recorders, file servers and printers and media, every Sony product has been designed to help surgeons and clinical staff capture, store, manage and distribute still pictures and video more efficiently.

Sony healthcare products are ruggedly designed for years of dependable use in the harshest of environments. Where relevant, many of them conform to latest MDD (Medical Device Directive) guidelines.



CONTENTS

Section (A) Acquire -----(A) i-viii

Colour Video Cameras, Multi-Purpose Cameras, Network Video Cameras, Video Network Station, Management Software

Section (B) See -----(B) i-iii

Videoconferencing Systems

Section (C) Store -----(C) i-vi

DVD Recorder, Hard Disk Recorder, Digital Video cassette Recorders, DICOM Capture Station, DICOM Satellite Server, Hybrid Network, Fileserver

Section (D) Show -----(D) i-vi

Multiformat Engine Unit, LCD Monitors, LCD Display

Section (E) Printing -----(E) i-xi

Colour Video Printers, Black & White Printers, Digital Film Imager, Print Media

Glossary

Product Index



Acquire

Connecting all Images to Patient Data

Our line-up of cameras represents quality you can count on from the leader in medical imaging technology. A new range of cameras, including new High Definition models, is available to meet requirements in fields as diverse and demanding as ophthalmic and cardiac surgery, neurosurgery, pathology, biomedical research and veterinary science.

Also featured in this section are cameras for other applications – analogue cameras, network video cameras and all in-one robotic models suitable for applications such as training, videoconferencing, telemedicine, remote patient monitoring and general surveillance.



Lens shown is optional



Lens shown is optional



DXC-990P

1/2-TYPE 3-CCD COLOUR VIDEO CAMERA

With so many functions, the DXC-990P is the perfect choice for a variety of applications. It incorporates ExwaveHAD technology which greatly improves camera sensitivity and reduces smear.

- ▶ Superior picture quality
- ▶ Wide choice of available lenses
- ▶ Advanced digital signal processing

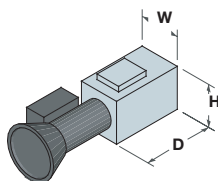
Microscopy – Observation

Features

- ExwaveHAD™ technology provides excellent sensitivity and low smear levels
- 1/2-type bayonet mount
- Compact and lightweight design
- High horizontal resolution of 850 TV lines
- RGB, Y/C, composite and component outputs
- On-screen programmable menu functions
- Full function control from the side panel or the optional RM-C950 Remote Control Unit
- DynaLatitude™, Partial Enhance and Colour Shading compensation functions
- Automatic Exposure (AE) functions
- UL 544 listed
- Complies with the MDD (Medical Device Directive) when used with optional CMA-D2MD/CE AC power supply

W 70mm (2 7/8 inches)
H 72mm (2 7/8 inches)
D 123.5mm (4 7/8 inches)

630 g (1 lb 6 oz)
 8.0 W (Max.)



SECURITY COMPLIANCE

MDD, EN55103-1/-2, 60601-1-1, FCC class A, IC class A

SEE ALSO:

www.sonybiz.net/vision

DXC-390P

1/3-TYPE 3-CCD COLOUR VIDEO CAMERA

Feature-rich and using a C-mount lens, this ExwaveHAD camera is ideal where picture accuracy and detail are essential.

- ▶ High picture quality
- ▶ Wide choice of available lenses
- ▶ Small and lightweight

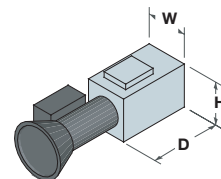
Microscopy – Observation

Features

- Exwave HAD technology provides excellent sensitivity and low smear levels
- C mount
- Very compact and lightweight design
- High horizontal resolution of 800 TV lines
- RGB, Y/C and composite video outputs
- On-screen programmable menu functions
- Full function control from the side panel or the optional RM-C950 Remote Control Unit
- DynaLatitude, Partial Enhance and Colour Shading compensation functions
- Automatic Exposure (AE) functions
- Complies with the MDD when used with optional CMA-D2MD/CE AC power supply

W 56mm (2 1/4 inches)
H 50mm (2 inches)
D 128mm (5 1/8 inches)

370 g (13 oz)
 7.6 W (Max.)



SECURITY COMPLIANCE

MDD

SEE ALSO:

www.sonybiz.net/vision



Lens shown is optional



Model shown: HDC-X300K

DXC-C33P

1/3-TYPE CCD COLOUR VIDEO CAMERA

The 2-piece compact design makes this model a perfect fit for space-limited applications, while offering great picture resolution and many useful features.

- ▶ Ultra-small 3CCD remote camera head
- ▶ High resolution
- ▶ DV output

Surgical microscopy – Research

Features

- Incorporates one of the smallest/lightest camera head units
- High horizontal resolution of 800 TV lines
- DV output terminal allows image recording into i.LINK interface-equipped VTR with no deterioration
- 10-bit DSP (Digital Signal Processing)
- DynaLatitude, Partial Enhance functions
- Frame memory (Long term exposure, Freeze function)
- Two AE (Automatic Exposure) areas can be preset
- Easy control and operation of the camera by external computer is possible with RS-232C interface
- External synchronisation (HD/VD, VBS) allows for multiple camera operation
- UL-2601-1 listed
- Complies with the MDD

Camera head unit (CHU):

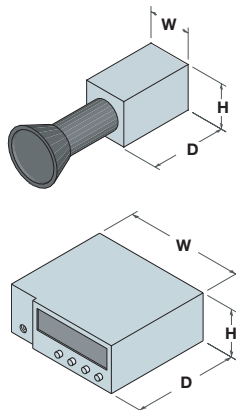
W 32mm (1 1/8 inches)
H 38mm (1 1/2 inches)
D 40mm (1 5/8 inches)

Camera control unit (CCU):

W 200mm (7 7/8 inches)
H 88mm (3 1/2 inches)
D 242mm (9 5/8 inches)

CHU: 48 g (1.7 oz)

CCU: 2.5 kg (5 lb 8 oz)
 18 W (Max.)



SECURITY COMPLIANCE
 MDD, UL-2601 listed

SEE ALSO:

www.sonybiz.net/vision

HDC-X300 Series

1/2-TYPE 3CCD MULTI-PURPOSE CAMERAS

Designed to meet the growing demand for a compact and affordable High Definition camera, the HDC-X300 series combine high performance with a range of unique features packed in a compact body.

- ▶ Superb picture quality
- ▶ Progressive mode
- ▶ Wide range of interfaces

Research – Medical imaging – Microscopy
 Endoscopy - Training

Features

- Three 1/2-inch type 1.5-megapixel HD CCD
- Low smear level of -120 dB
- High signal-to-noise ratio of 54 dB
- Progressive HD signals (23.976PsF/25PsF/29.97PsF)
- Interlaced HD signals (50i/59.94i)
- HD-SDI & D-sub 15-pin interfaces (HDC-X300/K)
- Optical Fibre Interface HFU-X310 provides HD-SDI input, SD/HD genlock & tally inputs (HDC-X310/K)
- Compact & lightweight design
- Low minimum illumination of 0.003 lux (+48 dB gain, 64 frames slow shutter)
- Auto focus function (using focus servo lens VCL-719BXS)
- Flexible image controls
- Trigger function allows synchronised operation with external equipment
- Remote control capability
- Optical ND filter and electronic CC function

HDC-X300 (without projecting parts)

W 95mm (3 3/4 inches)
H 95mm (3 3/4 inches)
D 160mm (6 3/8 inches)

HDC-X310 (without projecting parts)

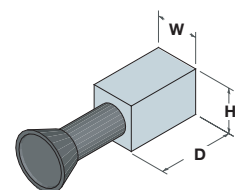
W 95mm (3 3/4 inches)
H 95mm (3 3/4 inches)
D 160mm (6 3/8 inches)

HFU-X310 (without projecting parts)

W 200mm (7 7/8 inches)
H 88mm (3 1/2 inches)
D 215mm (8 1/2 inches)

HDC-X300: 1.2 kg (2 lb 10 oz)
HDC-X310: 1.3 kg (2 lb 13 oz)
HFU-X310: 2 kg (4 lb 6 oz)

HDC-X300: 18 W (camera head only)
HDC-X310: 19 W (camera head only)
HFU-X310: 0.6 A (Current consumption Max.)



SEE ALSO:

www.sonybiz.net/media



BRC-300P

3CCD COLOUR VIDEO CAMERA

This all-in-one compact robotic camera is specifically designed for remote video-shooting applications and provides high-quality, high-resolution images in both 4:3 and 16:9 modes.

- ▶ Wide range pan/tilt/zoom
- ▶ Wide range of interfaces
- ▶ All-in-one design

Training – Distance learning - Videoconferencing

BRC-H700

HIGH DEFINITION 3CCD COLOUR VIDEO CAMERA

This High Definition all-in-one compact robotic camera is specifically designed for remote video-shooting applications where images are displayed on large-screen displays and provides astounding video quality.


- ▶ Outstanding picture quality
- ▶ Versatile video outputs
- ▶ Remote control capability


Distance learning – Teaching hospitals

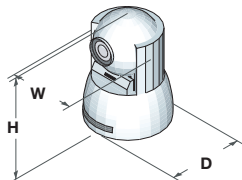
Features

- 1/4.7-type IT Megapixel 3-CCD with Advanced HAD technology
- Unique-all-in-one design - combines camera, lens & pan/tilt mount
- 48x zoom capability
- Minimum illumination - 7 lx at F1.6
- Horizontal resolution 600 TV lines
- High-performance pan/tilt/zoom mechanism
- 4:3/16:9 aspect selectable (16:9 precision technology)
- Image flip function - allows for desk top or ceiling mount installation
- Optional interface card slot -RGB, SDI, and Fibre
- Optional easy-to-use and ergonomic Remote Control Unit - remotely control via RS-232C and RS-422 (VISCA protocol)
- Optional Optical Multiplex Unit - allows for long-distance operation using fibre cable

W 180mm (7 1/8 inches)
H 210.1mm (8 3/8 inches)
D 205mm (8 1/8 inches)
 (without projecting parts)

 2.7 kg (5 lb 15 oz)


 21.6 W (Max.)
 (without optional card)




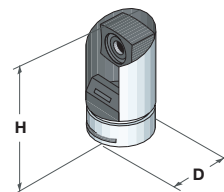
Features

- Three 1/3 type HD IT CCDs provide total of 1.12 megapixels each
- Unique-all-in-one design - combines camera, lens & pan/tilt mount
- 48x zoom capability
- Minimum illumination - 6 lx at F1.6
- High-performance pan/tilt/zoom mechanism
- Wide range of versatile optional interface cards allow for flexible analogue and digital systems
- Image flip function - allows for desktop or ceiling mount installation
- Sixteen presets allow camera settings to be configured
- Optional easy-to-use and ergonomic Remote Control Unit - remotely control via RS-232C and RS-422 (VISCA protocol)
- Multi-function IR remote commander unit supplied as standard
- Optional Optical Multiplex Unit - allows for long-distance operation using fibre cable

D 207mm (8 1/8 inches)
H 315.8mm (12 1/2 inches)

 4.5 kg (9 lb 15 oz)

 24 W (Max.)
 (without optional card)





SSC-DC80P Series

1/2-TYPE CCD COLOUR VIDEO CAMERAS

Offering outstanding picture quality, the feature-rich SSC-DC80P series is ideal for high-end video monitoring applications.

- ▶ Ideal for difficult or variable lighting conditions
- ▶ Activity detection function
- ▶ Privacy zone masking

General surveillance – Patient monitoring – Training



SNC-RZ30P

PTZ NETWORK VIDEO CAMERA

This high-end network camera combines network functionality with a pan/tilt/zoom feature, taking remote monitoring to new levels.

- ▶ Wireless option
- ▶ Embedded activity detection
- ▶ Day/Night function for optimal operation in low-light conditions

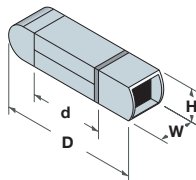
General surveillance – Patient monitoring – Training

Features

- High sensitivity (Minimum illumination 0.4 lx, F 1.2)
- Two preset memories for menu settings that allow you to load the desired settings quickly
- Automatic white balance (ATW/ATW PRO)
- Auto-iris lens controlled by video signal or DC power supply
- BLC (Backlight Compensation)
- The variable gamma allows the unit to accommodate to various types of environment
- Privacy zone masking function for hiding the area which you do not want to display on the screen
- Activity detection function allows the unit to detect a change of the video signal in the detection area and output an alarm
- In addition to Video out (BNC type), S-Video out connector is equipped for Y/C output
- Up to 24 characters of camera title can be superimposed on the video

without front / rear cover
W 70mm (2 7/8 inches)
H 57mm (2 1/4 inches)
d 131mm (5 1/8 inches)

with front / rear cover
W 70mm (2 7/8 inches)
H 57mm (2 1/4 inches)
D 260mm (10 1/4 inches)



	without front/ rear covers	with front/ rear covers
SSC-DC80P	Approx 460g	560g
SSC-DC83P	Approx 450g	550g
SSC-DC88P	Approx 500g	600g

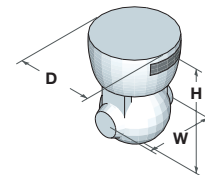
SSC-DC80P 4.6 W
 SSC-DC83P 4.4 W
 SSC-DC88P 4.2 W

Features

- IP network colour camera with integrated high-speed pan/tilt/zoom
- Remote video monitoring from PCs using a standard web browser
- 100 Base-TX /10 Base-T Ethernet
- Simultaneous access for up to 50 users
- Integral 25x auto-focus zoom lens covers a wide range of viewing angles
- High picture quality – 1/6 type 800,000 pixel IT Super HAD CCD with DSP
- High sensitivity - 3.0 lux (colour) and 0.18 lux (B&W mode) at F1.6 (50 IRE)
- Up to 25 frames/s with VGA quality (640 x 480)
- Four selectable image sizes (including 736 x 480)
- Image transfer using FTP or SMTP
- Activity detection and alarm trigger functions
- Day/Night mode – allows images to be viewed even in low-light conditions
- RS-232C/RS-485 remote control interface
- Two type II PCMCIA expansion slots

W 140mm (5 5/8 inches)
H 175mm (7 inches)
D 144mm (5 3/4 inches)

1.2 kg (2 lb 10 oz)
 21.6 W



SEE ALSO:
 YS-W170A | SNT-V704

SEE ALSO:
 REALSHOT MANAGER



SNC-RZ25P

PTZ NETWORK VIDEO CAMERA

This MPEG-4/JPEG pan/tilt/zoom camera incorporates a built-in web server and network interface allowing camera control and monitoring in any TCP/IP environment.

- ▶ Motion detection
- ▶ Day/Night function for optimal operation in low-light conditions
- ▶ Bi-directional audio

General surveillance – Patient monitoring – Training

Features

- Built-in 18x AF zoom lens
- High speed and wide range pan/tilt/zoom
- High quality and high sensitivity (0.7lux, F1.4) with the latest 1/4-type ExwaveHAD technology
- Day/Night function
- Selectable compression format: MPEG-4 and JPEG
- Smooth image realized by high frame rate:
- JPEG: QVGA: max. 25fps, VGA: max.18fps
- MPEG4: QVGA: max. 25fps, VGA: max.15fps
- Bi-directional Audio
- Stable transmission even via internet connectivity such as ADSL: Adaptive rate control and multicasting capability
- Compact Flash slot for image storage
- Wireless card usage: IEEE802.11b compliant
- Unattended operation thanks to built-in motion detection
- Analogue composite video output
- Versatile Sensor in/Alarm out ports

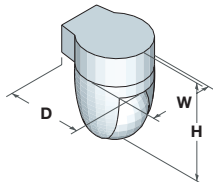
W 140mm (5 5/8 inches)
H 205mm (8 1/8 inches)
D 148mm (5 7/8 inches)



1.3 kg (2 lb 13 oz)



18 W (Max.)



SNC-Z20P

NETWORK VIDEO CAMERA

Equipped with an auto-focus 18x optical-zoom lens, this fixed camera can zoom in on a small or distant object with exceptional clarity.

- ▶ 18x optical zoom
- ▶ Wireless operation
- ▶ Day/Night function for optimal operation in low-light conditions

General surveillance – Patient monitoring – Training

Features

- IP network colour video camera with integrated zoom lens
- Remote video monitoring from PCs using a standard web browser
- 100 Base-TX /10 Base-T Ethernet
- High frame rate of up to 25 frames/s with VGA quality (640 x 480)
- 1/4 type 440,000 pixel IT Exwave HAD CCD with DSP
- Day/Night Function and Slow Shutter to provide optimised sensitivity
- Exwave HAD technology offers extremely high sensitivity: 0.7 lux in colour mode and 0.01 lux (F1.4, 50 IRE, Slow shutter OFF) in B/W mode and high resolution of 460 TV lines.
- Optional Wide Conversion Lens available
- Network Security Functions including IP Filtering and Password Protection
- One type II PCMCIA expansion slot
- Power-over-Ethernet operation
- Alternative power source operations: automatically selects AC 24 V or DC 12 V
- RS-232C interface
- Activity detection and alarm trigger functions
- Pre-/Post-Alarm image storage
- Image transfer using FTP/SFTP

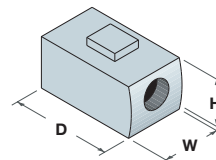
W 80mm (3 1/8 inches)
H 77mm (3 inches)
D 177mm (7 inches)



800 g (2 lb 10 oz)



9 W (Max.)



SEE ALSO:
REALSHOT MANAGER

SEE ALSO:
REALSHOT MANAGER



SNC-CS50P

FIXED NETWORK CAMERA

This high-performance camera includes many useful features for remote monitoring applications and delivers exceptional picture quality, even in low-light conditions.

- ▶ Wireless capability
- ▶ Day/Night function
- ▶ Intelligent motion & object detection

General surveillance – Patient monitoring – Training



SNT-V704

VIDEO NETWORK STATION

This high-performance video network station enables analogue video cameras to be remotely monitored and controlled over a network.

- ▶ Motion detection
- ▶ Bi-directional audio
- ▶ Expandable storage

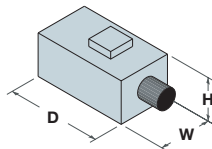
General surveillance – Patient monitoring – Training
Conversion of medical imaging feeds

Features

- High-performance network video camera
- High picture quality – 1/3 type CCD with SuperExwave technology
- 100 Base-TX /10 Base-T Ethernet
- Simultaneous access up to 20 users
- Selectable JPEG, MPEG-4, H264 compression formats
- High sensitivity – 0.4 lux (colour) and 0.04 lux (B&W mode) at F0.95 (50 IRE)
- Up to 30 frames/s with VGA quality (640 x 480)
- Three selectable image sizes
- Image transfer using FTP or SMTP
- Activity detection, motion detection, anti-tampering, unattended object and alarm trigger functions
- Day/Night mode – allows images to be viewed even in low-light conditions
- RS-232C/RS-485 remote control interface
- One type II PCMCIA expansion slot
- Power-over-Ethernet operation

W 84mm (3 3/8 inches)
H 69mm (2 3/4 inches)
D 196mm (7 3/4 inches)
excluding cover equipment

750 g (1 lb 15 oz)
 9 W (Max.)

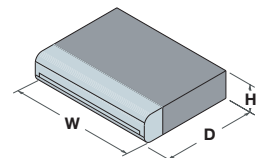


Features

- Enables up to four cameras to be remotely monitored and controlled over existing TCP/IP networks (LAN, WAN)
- Monitoring and control over the network using a standard web browser
- Easy to install, expand and maintain
- Multi-user access (up to 50) and password protection
- High refresh rate of up to 25 fps
- Remote PTZ camera control
- Bi-directional audio
- JPEG/MPEG-4 compression
- Activity detection function
- Privacy masking function
- Alarm image buffering allows storage of pre-alarm and post-alarm images
- When an alarm occurs a JPEG file showing the alarm event can be sent to a pre-determined e-mail address or server
- USB port for additional data memory storage

W 210mm (8 3/8 inches)
H 42mm (1 11/16 inches)
D 202mm (8 1/8 inches)

1.2 kg (2 lb 10 oz)
 18 W (Max.)

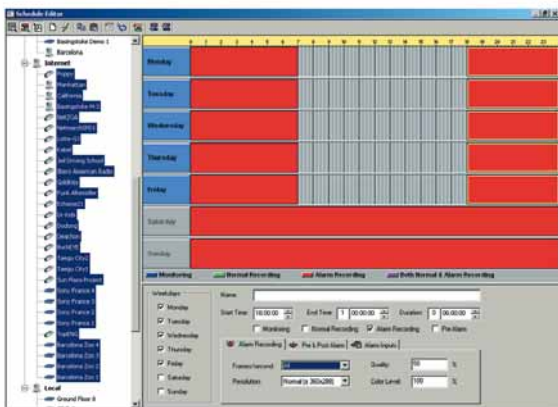
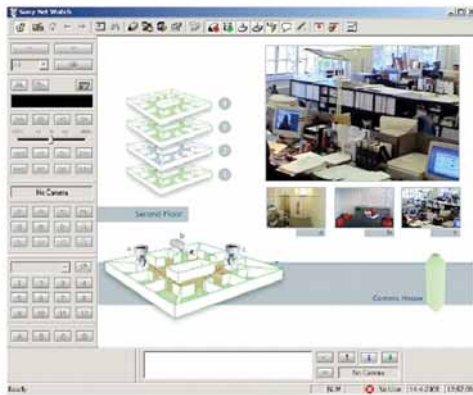
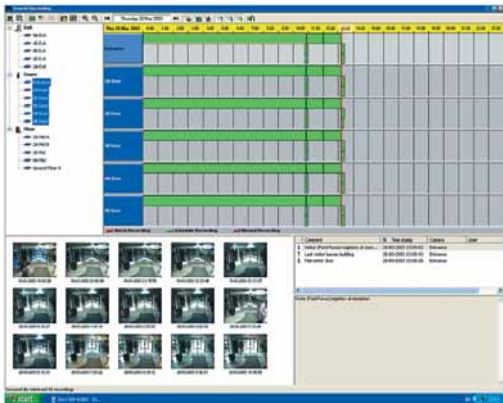


SECURITY COMPLIANCE

UL2044, IEC60950-1, FCC class A, IC class A, VCCI class A
EN55024, EN50130-4, EN55022 class A, JATE

SEE ALSO:
REALSHOT MANAGER

SEE ALSO:
SSC-DC80P Series | REALSHOT MANAGER



RealShot Manager

MANAGEMENT SOFTWARE

RealShot Manager is a management software for video monitoring over IP and greatly expands the capabilities of a network monitoring system.

- ▶ Monitoring software platform
- ▶ View, record, archive, manage
- ▶ Client/Server architecture for scalability

General surveillance – Patient monitoring – Training

Features

- Flexible, customisable layouts and user-friendly interface
- Flexible recording (Manual/Scheduled/ Alarm & pre-alarm)
- Easy search of recording images
- Software Motion Detection
- Alarm trigger by network cameras' activity detection
- Web viewing
- Capability of integration with other system/ software through API
- Remote client
- Flexible license management
- Dynamic masking capability
- Easy operation of free utility software "RSM File Player"
- Pan/tilt/zoom by image
- High refresh rate / high quality image monitoring & recording
- Audio support enhancement
- MPEG-4 support
- Easy set-up module equipped

IMZ-RS300C

RSM client software license

IMZ-RS301

RSM software license for 1 IP networked image source

IMZ-RS304

RSM software license for 4 IP networked image sources

IMZ-RS309

RSM software license for 9 IP networked image sources

IMZ-RS316

RSM software license for 16 IP networked image sources

IMZ-RS332

RSM software license for 32 IP networked image sources

SEE ALSO:

SNC-RZ30P | SNC-Z20P | SNC-CS05P | SNC-RZ25P
SNT-V704



See

Telemedicine solutions

Telemedicine solutions from Sony enable clinical staff to offer personal advice to patients without leaving their office; view an x-ray or surgical procedure without travelling to another hospital; or simply consult a colleague for a second opinion in another hospital or even another country. Beyond 'face to face' consultations, Sony videoconferencing solutions give students and doctors alike a close-up view of surgical procedures or teaching presentations, wherever they are.

Operating over standard hospital IT networks or the Internet, Sony videoconferencing solutions offer high quality pictures, audio and data exchange that can be equally appreciated by a consultant at his desk or in a meeting room or a hundred students in a lecture theatre.



PCS-G70P

HIGH-END VIDEOCONFERENCING GROUP SYSTEM

The PCS-G70P is a high-end videoconferencing solution designed to complement boardrooms, large conferencing centres, auditoriums and healthcare applications where high audio and video quality is key.

- ▶ Superb Audio and Video quality
- ▶ Unequaled Multipoint Videoconference experience
- ▶ Dual Video capability

Remote diagnostics – Telemedicine – Distance learning – Digital OR – Large meeting rooms
Classrooms – Auditoriums – Operating theatres



PCS-G50P

MID-RANGE VIDEOCONFERENCING GROUP SYSTEM

Versatile and flexible, the PCS-G50P sets a new industry benchmark for mid-range video-conference systems while delivering a powerful solution to your communication challenge.

- ▶ The best value for money on the market today
- ▶ Easy to use; user-friendly and intuitive interface
- ▶ Flexible, scalable & future-proof



Remote diagnostics – Telemedicine – Distance learning – Digital OR – Meeting rooms – Classrooms

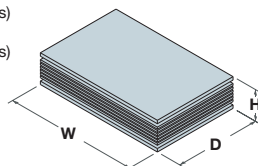
Features

- High bandwidth of up to 4 Mbps over IP and up to 2 Mbps over ISDN
- High video quality: TV-like (60 fields per second)
- 16:9 high quality 3CCD camera (option)
- Intelligent Audio tracking and face detection camera (option)
- MPEG-4 wideband audio and H.264 video supported also in multi-point Videoconference
- Shares PC data (e.g. DICOM images) by using H.239 ITU-T standard
- Dual live video communication (e.g. Overview camera + Endoscopic camera)
- Multi-point videoconferencing for up to six sites using ISDN and/or IP connections or up to 10 sites through cascading*1
- 5-site independent monitor output in a multi-point videoconference with on-screen display of site names
- Records the videoconference thanks to Memory Stick and allows playback on a laptop
- Capable of speedmatching to connect different sites on different bandwidths in a multipoint videoconference
- Advanced Quality of Service (QoS) mechanisms
- H.235 ITU-T standard encryption and Advanced Encryption Standard (AES) for audio, video and data security
- Multi-language on-screen user interface, 17 languages supported

*1 Optional MCU (Multipoint Control Unit) software is required.

W 420mm (16 5/8 inches)
H 70mm (2 3/4 inches)
D 256mm (10 1/8 inches)
(Excl. Projecting Parts)

 5.3 kg (11 lb 11 oz)
 DC 19.5 V, 5 A





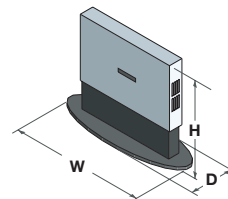
Features

- High bandwidth of up to 4 Mbps and up to 2 Mbps over ISDN
- High video quality: TV-like (60 fields per second)
- 16:9 high quality 3CCD camera (option)
- MPEG-4 wideband audio and H.264 video supported also in multi-point videoconference
- Shares PC data (e.g. DICOM images) by using H.239 ITU-T standard
- Multipoint videoconferencing for up to six sites using ISDN and/or IP connections or up to 10 sites through cascading*1
- Records the videoconference thanks to Memory Stick and allows playback on a laptop
- Capable of speedmatching to connect different sites on different bandwidths in a multipoint videoconference
- Advanced Quality of Service (QoS) mechanisms
- H.235 ITU-T standard encryption and Advanced Encryption Standard (AES) for audio, video and data security
- Multi-language on-screen user interface, 17 languages supported

*1 Optional MCU (Multipoint Control Unit) software is required.

W 420mm (16 5/8 inches)
H 70mm (2 3/4 inches)
D 256mm (10 1/8 inches)
(Excl. Projecting Parts)

 4.6 kg (10 lb 2 oz)
 DC 19.5 V, 5 A



SEE ALSO:

FWD-32LX1 | FWD-42LX1

SEE ALSO:

FWD-32LX1 | FWD-42LX1



PCS-TL50P

EXECUTIVE DESKTOP VIDEOCONFERENCING SYSTEM

Ideal for executive personal communication and smaller meeting rooms, the PCS-TL50P is an all-in-one videoconferencing package with a built-in camera and 20-inch widescreen LCD display that doubles as a PC monitor.

- ▶ Stylish and smart design
- ▶ User-friendly GUI
- ▶ Flexible display

Desktop environments – Remote diagnostics –
Telemedicine – Distance learning – Patients' rooms –
Small meeting rooms

PCS-TL30P

DESKTOP VIDEOCONFERENCING SYSTEM

Network-ready out of the box, the PCS-TL30P is an all-in-one 17-inch wide-screen LCD videoconferencing system including a unique mouse function, built-in camera, speakers and microphone. It can also double as a PC monitor.



- ▶ Stylish and smart design
- ▶ Unique Mouse Operation
- ▶ Flexible display

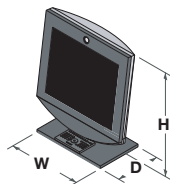
Desktop environments – Remote diagnostics –
Telemedicine – Distance learning – Patients' rooms –
Small meeting rooms

Features

- 20-inch 16:9 LCD screen with built-in videoconference system
- Digital pan/tilt/zoom camera
- Built-in microphones and stereo speakers
- Quick dialling buttons
- Communication at up to 2 Mbps over IP or 768 KBPS over ISDN
- H.239 Data sharing (XGA send and receive)
- 6-site multipoint (IP & ISDN bridging)
- Smart Design with unique wide-screen LCD
- Shows remote view and XGA data together
- Doubles as a PC monitor or video device
- Excellent video and audio, H.264 & MPEG-4 14 kHz audio
- Advanced Quality of Service (QoS) mechanisms
- H.235 ITU-T encryption Standard and Advanced Encryption Standard (AES) for audio, video and data security
- Multi-language on-screen user interface, 17 languages supported

W 528mm (20 7/8 inches)
H 445mm (17 5/8 inches)
D 110mm (4 3/8 inches)
(Excl. Projecting Parts)



 10 kg (22 lb 1 oz)
 DC 19.5 V, 7.7 A

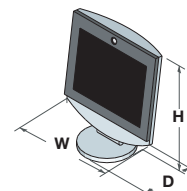


Features

- 17-inch 16:9 LCD screen with built-in videoconference system
- Digital pan/tilt/zoom camera
- One mouse to control both PC and VC system
- Built-in microphones and stereo speakers
- Quick dialling icons
- Communication at up to 2 Mbps over IP
- H.239 Data sharing (XGA send and receive)
- Smart Design with unique wide-screen LCD
- Shows remote view and XGA data together
- Doubles as a PC monitor
- Excellent video and audio, H.264 & MPEG-4 14 kHz audio
- Advanced Quality of Service (QoS) mechanisms
- H.235 ITU-T encryption Standard and Advanced Encryption Standard (AES) for audio, video and data security
- Multi-language on-screen user interface, 8 languages supported

W 424mm (20 3/4 inches)
H 419mm (16 1/2 inches)
D 258mm (10 1/4 inches)
(Excl. Projecting Parts)

 8 kg (17 lb 10 oz)
 DC 19.5 V, 6.15 A





Store

Dependable, cost efficient solutions

Acquiring, managing and distributing the enormous quantities of visual information generated in a modern hospital is one thing. Making sure that it's recorded and stored safely and securely for quick, easy access - years later if required - is quite another. There's a full range of Sony's recording, storage and archive solutions; from all-in-one file servers supplied ready to run with DICOM server software; right up to hospital-wide solutions that are designed to integrate seamlessly with PACS and Hospital Information Systems.



DVO-1000MD

MDD COMPLIANT DVD RECORDER

This DVD recorder has been designed specifically for use in a wide range of surgical and other healthcare environments. Compact, rugged and easy to use, it offers all the benefits of removable disc media.

- ▶ DVD+RW Digital Recording
- ▶ Handles patient metadata
- ▶ Complementary hard disk recording

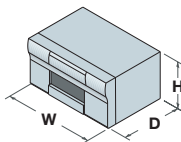
Ultrasound – Endoscopy – Radiology – Surgery

Features

- Rewritable DVD+RW disc as recording media (highly recyclable, low-cost and wide interoperability)
- High quality MPEG2 video recording (HQ/SP/LP mode available)
- Quick recording and high reliability with complementary hard disk recording
- Long recording time (up to 3 hours)
- High-speed colour picture search
- Quick random access by Title and Chapter
- Metadata handling (Patient data / Calibration data)
- Repeat playback
- 625 / 525 switchable
- RS-232C and USB remote control
- Foot switch control
- Versatile interfaces (i.LINK input, S-Video, Composite, Analogue audio)
- Compact size & lightweight
- MDD compliant (EN60601-1 / EN60601-1-2, UL 2601-1 and CSA C22.2 NO.60601.1)

W 212mm (8 3/8 inches)
H 128.5mm (5 inches)
D 382mm (15 inches)

⚖️ Approx. 6 kg (13 lb 3 oz)
⚡ 35 W



SECURITY COMPLIANCE
MDD

SEE ALSO:

www.sonybiz.net/healthcare



DSR-DR1000AP

HARD DISK RECORDER

This DVCAM hard disk recorder takes full advantage of the benefits of disk-based recording while maintaining the same operational feel as a VTR.

- ▶ 12-hour recording
- ▶ Simultaneous record and play
- ▶ Network transfer capability

Features

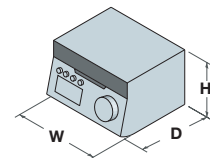
- DVCAM recording for over 12 hours (160 GB hard drive)
- Compact & lightweight (Half-rack size, 7.5 kg)
- Simultaneous recording & playback
- Clip segment playback for playout of designated video segment
- DMC playback with the range of ± 2 times normal speed
- RS-422A Disk Protocol support*1
- Seamless repeat playback of a specified clip
- Continuous loop recording
- Pre-alarm recording (automatic recording triggered by an external alarm signal)
- Interval recording
- i.LINK*2 interface with AV/C & SBP2 protocols
- Versatile interfaces (i.LINK, SDI, Component, Y/C, Composite, AES/EBU, Analogue audio, TC I/O, RS-422A, Ethernet)
- Network capability (file transfer using FTP via 100Base-T Ethernet)

*1 Basic commands only.

*2 i.LINK stands for IEEE1394–1995 standards and their revisions.

W 210mm (8 3/8 inches)
H 130mm (5 1/8 inches)
D 422mm (16 5/8 inches)

⚖️ 7.5 kg (16 lb 10 oz)
⚡ 75 W





DSR-1500AP

DIGITAL VIDEO CASSETTE RECORDER

With a space-saving design, this desktop editing VTR packs top-level performance and features with a full range of interfaces.

- ▶ Perfect VTR with no compromise
- ▶ Full range of interfaces
- ▶ Quick, reliable mechanism

DSR-50P

DIGITAL VIDEO CASSETTE RECORDER

This portable recorder combines a built-in monitor with a range of useful features including battery and DC operation.

- ▶ Portable design with carrying handle
- ▶ Built-in LCD monitor
- ▶ Battery & DC operation

Features

- Compact, half-rack size
- Superb picture quality of the DVCAM format
- Playback compatibility with DV (25 Mb/s) family formats including consumer DV (SP mode) and DVCPRO without a mechanical adapter*1
- DV-format recording capability (SP mode, 10-µm track pitch recording)*2
- Long recording time: max. 184 min (DVCAM mode)/276 min (DV SP mode) with a standard-size cassette
- Versatile digital interfaces: equipped with i.LINK (DV)*3, and optional SDI, SDTI (QSDI)*4 and AES/EBU interfaces
- Extensive range of analogue interfaces: composite, component, S-video and two XLR audio channels
- Variable-speed playback within the range of -0.5 to +0.5 times normal play speed
- Menu keys on front panel for frame-by-frame picture search
- RS-422A remote control interface

*1 SDTI (QSDI) interface does not support DVCPRO playback.

*2 Assemble or insert editing is not possible.

*3 i.LINK stands for IEEE1394-1995 standards and their revisions.

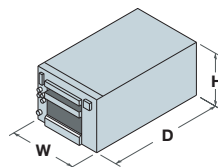
*4 SDTI (Serial Data Transport Interface) is defined as SMPTE 305M.

SDTI (QSDI) is the DV compressed signal interface defined as SMPTE 322M.

W 210mm (8 3/8 inches)
H 130mm (5 1/8 inches)
D 420mm (16 5/8 inches)

6 Kg (13 lb 3 oz)

55 W (Max.)



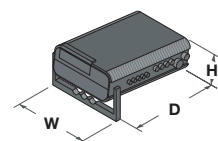
Features

- Superb picture quality of the DVCAM format
- Max. 184 minutes of recording/playback time with a standard cassette and 40 minutes with a mini cassette in DVCAM mode
- Recording and playback of consumer DV (SP mode only) tapes
- Built-in 2.5-inch full-colour LCD monitor
- Composite and S video in/out connectors
- Analogue component video out connectors
- Battery operation capability

W 279mm (11 inches)
H 99mm (4 inches)
D 315mm (12 1/2 inches)

3.9 Kg (8 lb 9 oz)

15 W (Max.)





DSR-45P

DIGITAL VIDEO CASSETTE RECORDER

A versatile desktop DVCAM recorder, equipped with a number of interfaces and user-friendly features and provides great cost/performance ratio.

- ▶ Compact & lightweight design
- ▶ Built-in LCD monitor
- ▶ RS-232C & RS-422A control

DSR-25

DIGITAL VIDEO CASSETTE RECORDER

A versatile desktop DVCAM recorder which is NTSC/PAL switchable. It is packed with user-friendly features and provides great cost/performance ratio.

- ▶ Compact & lightweight design
- ▶ Built-in LCD monitor
- ▶ PAL/NTSC switchable

Features

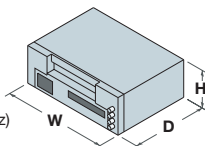
- Superb picture quality of the DVCAM format
- Recording and playback capability of the DV format (SP mode only)^{*1}
- Long recording time: up to 184 minutes with a standard-size cassette, 40 minutes with a mini-size cassette in DVCAM mode
- Full range of analogue Video IN/OUT: component, composite and S-video
- Four channel independent Audio IN/OUT with XLR connectors for Audio OUT
- Interfaces include RS-422A, RS-232C, LANC, Control S, and i.LINK^{*2} (DV)
- Duplication function (including the duplication of cassette memory data)
- Compact size (half-rack size width, 2U height)
- Built-in 2-inch type (123,200 dot) colour LCD monitor
- Wireless remote controller RMT-DS5 supplied

^{*1} When recording in DV (SP) format, the transition between cut to cut may not be smooth. Similarly when the recording format is switched between DVCAM and DV, the transition may not be recorded smoothly.

^{*2} i.LINK stands for IEEE 1394-1995 standards and their revisions. The DSR-45P is not equipped with the synchronisation capability, therefore, it is recommended to be used only as a source feeder in A/B roll editing.

W 212mm (8 3/8 inches)
H 98mm (3 7/8 inches)
D 392.8mm (15 1/2 inches)

Approx. 4.6 kg (10 lb 2 oz)
22 W



Features

- Superb picture quality of the DVCAM format
- Recording and playback capability of DV recorded tapes (SP mode only)^{*1}
- Long recording time: up to 184 minutes with a standard-size cassette and 40 minutes with a mini-size cassette in DVCAM mode
- Recording and playback capability of both NTSC/PAL signals^{*2}
- Interfaces include LANC, Control S, and i.LINK^{*3} (DV)
- Compact size (half-rack size width, 2U height)
- Built-in 2-inch type (123,200 dot) colour LCD monitor
- Wireless remote controller RMT-DS5 supplied

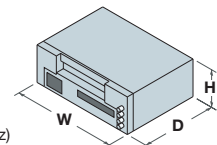
^{*1} When recording in DV (SP) format, the transition between cut to cut may not be smooth. Similarly when the recording format is switched between DVCAM and DV, the transition may not be recorded smoothly.

^{*2} The DSR-25 is not equipped to convert signals from NTSC to PAL, or vice versa.

^{*3} i.LINK stands for IEEE 1394-1995 standards and their revisions.

W 212mm (8 3/8 inches)
H 98mm (3 7/8 inches)
D 392.8mm (15 1/2 inches)

Approx. 4.3 kg (9 lb 8 oz)
16 W





DSR-11

DIGITAL VIDEO CASSETTE RECORDER

With a compact and versatile design, this recorder provides all the benefits of DVCAM with standard DV format compatibility.

- ▶ Ultra-compact
- ▶ Can be installed vertically
- ▶ PAL/NTSC switchable

Features



- Superb picture quality of the DVCAM format
- Max. 184 minutes of recording/playback time with a standard cassette and 40 minutes with a mini cassette in DVCAM mode
- Recording and playback of consumer DV (SP mode only) tapes
- NTSC/PAL compatible*1
- Composite and S video in/out connectors
- i.LINK*2 (DV In/Out) interface based on the IEEE 1394 standard
- Auto repeat function

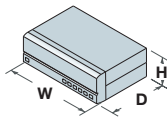
*1 When recording in DV (SP) format, the transition between cut to cut may not be smooth. Similarly when the recording format is switched between DVCAM and DV, the transition may not be recorded smoothly.

*2 The DSR-25 is not equipped to convert signals from NTSC to PAL, or vice versa.

*3 i.LINK stands for IEEE 1394-1995 standards and their revisions.

W 180mm (7 1/8 inches)
H 69mm (2 3/4 inches)
D 258.4mm (10 1/4 inches)

 2.8 kg (6 lb 2 oz)
 15 W (Max.)



BZMD-1

DICOM CAPTURE STATION

The BZMD-1 is a state-of-the-art solution for still/video acquisition and DICOM file creation. Supporting a wide range of video input formats, including HD-SDI, it is ideal for capturing any surgical procedure.



- ▶ DICOM MPEG2 compatibility
- ▶ High Definition compatible
- ▶ Extremely user-friendly

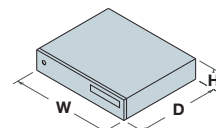
Endoscopy – Surgery – Radiology

Features

- Wide range of video input formats and definitions
- Records still and moving images simultaneously
- DICOM networking capability: allows user to store files to central DICOM storage
- Built-in DVD and CD burning of data
- Supports DICOM printing
- Complies with MDD
- User-friendly and intuitive operation

W 431.6mm
H 109.1mm
D 370.5mm

 12.5 Kg
 180 W (Max.)



SECURITY COMPLIANCE
MDD, EN 60601-1, EN 60601-1-2, IEC 60601-1

SEE ALSO:

UP-DF500 | DICOM Satellite Server | HNF | DXC-990P |
DXC-390P | DXC-C33P | www.sonybiz.net/healthcare



DICOM Satellite Server

For an industry experiencing data explosion, the Sony DICOM Satellite Server provides a single, high-grade solution for DICOM file management, storage and archive.

- ▶ DICOM still and movie storage
- ▶ All-in-one management and storage
- ▶ Web access

Endoscopy – Surgery – Radiology

HNF

HYBRID NETWORK FILESERVER

HNF is an all-new, intelligent approach to data management. Combining managed disk and tape storage, it is completely scalable to your needs and requirements as they evolve.

- ▶ Data-lifecycle management made simple by Sony
- ▶ Reliable archive suitable for critical applications
- ▶ Automated maintenance

Endoscopy – Surgery – Radiology

Features

- DICOM-compliant storage of still and moving studies
- Web interface for easy administration and viewing of stored data
- Supports DICOM Query & Retrieve from compatible clients
- 660 Gb built-in storage capacity – expandable with Sony Hybrid Network Fileserver
- RAID 5 protected, hot-swappable disks

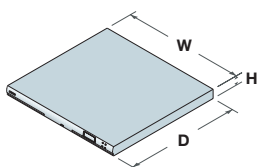
W 440mm
H 43.5mm
D 612mm



14 Kg



191 W (Max.)



Features

- Data Lifecycle Management solution with scalable performance and capacity
- Combines high-speed disk storage with affordable tape storage within a single, managed system
- Assigns data to most appropriate storage location
- High reliability through the use of RAID 0+1, RAID 5, tape storage and optional tape backup
- Up to 40 Tb total storage capacity
- Web-based administration GUI

SEE ALSO:

HNF | BZMD-1 | www.sonybiz.net/healthcare

SEE ALSO:

BZMD-1 | DICOM satellite server
www.sonybiz.net/healthcare



Show

Image presentation and display

Picture Perfect

Representation of the visual image has been a central part of medical science for hundreds of years - from the first anatomical sketches to high-resolution 3D computer realisations of the living body.

Sony offers a complete range of display and presentation devices, including products designed specifically to meet latest medical standards. Our extensive range of LCD monitors offer high resolution, excellent image contrast with stable, accurate colour reproduction. Feature-rich and with a wide variety of types, picture resolutions and sizes, the Sony line-up meets the needs of a huge range of applications.



LMD-1950MD

19 INCH SXGA MEDICAL GRADE LCD MONITOR

This high resolution LCD monitor with superb picture quality and DC power supply is ideal for Surgery Arm Mount Applications.

- ▶ Versatile Video and PC Inputs ranging from SD to HD
- ▶ No ventilation holes and DC power supply
- ▶ 10 bit LCD Panel for enhanced picture quality

General Surveillance – Minimum Invasive Surgery



LMD-2140MD

21 INCH XGA MEDICAL GRADE LCD MONITOR

Offering superb picture quality, the feature-rich LMD-2140MD is ideal for video endoscope cart installation.


- ▶ Versatile Video and PC Inputs ranging from SD to HD
- ▶ X-Algorithm for best moving picture quality
- ▶ User Memory for individual doctor settings


General Surveillance – Minimum Invasive Surgery

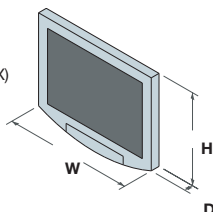
Features

- a-Si TFT Active Matrix LCD with an AR-coated protection panel
- Panel Resolution SXGA (1280X1024 dots)
- Sony's original X-Algorithm technology provides the best picture performance in both static and moving images thanks to Sophisticated I/P (interlace to Progressive) conversion
- Accepts signals ranging from SD to HD video, analogue VGA to SXGA PC input, as well as DVI-D input
- 5 types of optional input adaptors are offered for use in two rear slots
- Parallel and serial remote control ports as standard
- User Memory provides the capability of saving 20 patterns of memory settings. This allows doctors to easily set, save and recall their preferred picture settings using an assigned user name
- The following parameters can be saved: Colour temperature, Brightness, Contrast, Chroma, Phase, Aperture, Gamma, Aspect, Scan, Picture Delay Minimum, User Memory Name, User colour Temperature
- Seven language On-Screen Display
- VESA mounting standard

W 442mm (without SU-560)
H 403mm (without SU-560)
D 118mm (without SU-560)

 9.7 kg (with 2 x BKM-229X)
 9.2 kg (without option)

 66 W (Max.)
 (with 2 x BKM-229X)
 59 W (standard)
 (without option)




SECURITY COMPLIANCE


UL60601-1, CSA C22.2 No.60601, EN 60601-1, FCC Class A, IC Class A, CE(MDD), C-Tick, CCC, KTL, RPC

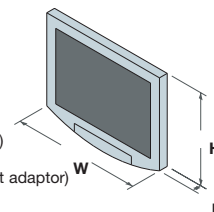
Features

- a-Si TFT Active Matrix LCD with an AR-coated protection panel
- Resolution 1024 x 768 dots
- Sony's original X-Algorithm technology provides the best picture performance in both static and moving images thanks to Sophisticated I/P (interlace to Progressive) conversion
- Accepts signals ranging from SD to HD video, analogue VGA to SXGA PC input, as well as DVI-D input
- 5 types of optional input adaptors are offered for use in two rear slots
- Parallel and serial remote control ports as standard
- User Memory provides the capability of saving 20 patterns of memory settings. This allows doctors to easily set, save and recall their preferred picture settings using an assigned user name
- Following parameters can be saved: Colour temperature, Brightness, Contrast, Chroma, Phase, Aperture, Gamma, Aspect, Scan, Picture Delay Minimum, User Memory Name, User colour Temperature
- Seven language On-Screen Display
- VESA mounting standard

W 505mm (20 inches)
H 444mm (17 3/8 inches)
D 119mm (4 3/4 inches)

 9.8 kg (21 lb 10 oz)

 100 W (Max.)
 (with 2 x BKM-255DV)
 92 W (standard)
 (without optional input adaptor)



SECURITY COMPLIANCE

UL60601-1, CSA 22.2 No.60601.1, EN 60601-1, FCC-A, IC-A, CE (MDD)-B, C-Tick, VCCI-A, JEIDA



MEU-WX2

MULTIFORMAT ENGINE UNIT

Equipped with the latest X-Algorithm technology delivering outstanding picture performance, the MEU-WX2 accepts a wide variety of signal formats such as computer and analogue video inputs.

- ▶ Easy installation
- ▶ Lightweight and simple
- ▶ Optional digital video decoder boards



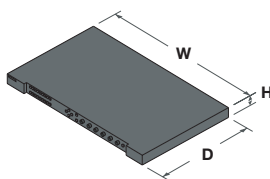
Features

- Signal-processing unit used with the LMD-152, LMD-172W, LMD-212, LMD-232W, LMD-322W
- Accepts RGB, analogue component, Composite, S-Video signals as standard
- Accepts SD-SDI signals, HD-SDI and DV signals by use of the appropriate optional input adaptor
- Lightweight

W 434mm (17 1/4 inches)
H 44mm (1 3/4 inches)
D 305mm (12 1/4 inches)
 (excluding projecting parts)

4.5 kg (9 lb 15 oz)
 92 W (Max.)

(with 1 x LMD-232W and 2 x BKM-243HS) and Standard 23 W (without optional input adaptor)



SECURITY COMPLIANCE

UL-1950, FCC Class-A, CSA C22.2 No.950 (c-UL), IC Class-A, EN60950, EN55103-1, EN55103-2, CE, VCCI Class-A, C-tick

SEE ALSO:

LMD-152 | LMD-172W | LMD-212 | LMD-232W | LMD-322W

LMD-152/ 172W/212/ 232W/322W

COLOUR LCD VIDEO MONITOR

These innovative two-piece type LCD monitors consist of a thin lightweight LCD monitor unit and a highly functional signal processing unit. They provide high-resolution pictures for the most demanding applications.

- ▶ Superb picture reproduction
- ▶ Stylish design
- ▶ Multiformalt monitors

SECURITY COMPLIANCE

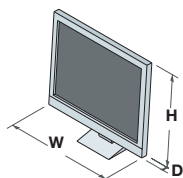
UL-1950, FCC Class-A, CSA C22.2 No.950 (c-UL), IC Class-A, EN60950, EN55103-1, EN55103-2, CE, VCCI Class-A, C-tick

Features

- 15/17.1/21/23/32-inch* LCD Monitor
- a-Si TFT Active Matrix LCD with an AR-coated protection panel
- High resolution of 1280 x 768 pixels (LMD-172W/232W/322W) and 1024 x 768 pixels (LMD-152/212)
- WXGA LCD panel provides high-brightness and high-contrast images with natural colour reproduction
- ChromaTru colour-matching technology for accurate colour reproduction

- Accepts RGB and HD signal formats as well as VGA and SXGA computer signals
- Smart APA (Auto Pixel Alignment) for Computer Input
- VESA mounting standard
- Selectable Scan Size for Video Input and Aspect Ratio
- Seven-language On-Screen Display
- Two-piece system design in which connections, power supplies and video processing are contained in a separate unit (the MEU-WX2), allowing for more flexibility in the placement of the monitor

* Viewable area measured diagonally



LMD-152:
W 379mm (15 inches)
H 297mm (11 3/4 inches)
D 71mm (2 7/8 inches)

5 kg (11 lb)
 35 W (Max.)

LMD-232W:
W 563mm (22 1/4 inches)
H 372mm (14 3/4 inches)
D 78mm (3 1/8 inches)

6.6 kg (14 lb 9 oz)
 62 W (Max.)

LMD-172W:
W 434mm (17 1/4 inches)
H 294mm (11 5/8 inches)
D 67mm (2 3/4 inches)

4.9 kg (10 lb 13 oz)
 42 W (Max.)

LMD-322W:
W 790mm (31 1/8 inches)
H 512mm (20 1/4 inches)
D 94mm (3 3/4 inches)

25 kg (55 lb 2 oz)
 150 W (Max.)

LMD-212:
W 515mm (20 3/8 inches)
H 409mm (16 1/8 inches)
D 77mm (3 1/8 inches)

7 kg (15 lb 7 oz)
 70 W (Max.)



LMD-2010 LMD-1410

14 AND 20 INCH LCD MONITORS

Utilising the latest fast-responding LCD panels these monitors offer pictures with high brightness and contrast and a wide (170-degree) viewing angle.

- ▶ Convenience & flexibility
- ▶ High quality picture processing
- ▶ Parallel remote control

Features

- a-Si TFT Active Matrix LCD
- VGA Resolution 640 x 480 dots
- Input versatility: SD inputs - from analogue composite and Y/C (S-Video) to analogue component and RGB
- VGA type LCD panels provides high-brightness and high contrast images with natural colour reproduction
- Wide viewing angle of 170 degrees
- VESA mounting standard

LMD-2010

Dimensions with stand
W 470mm (18 5/8 inches)
H 441mm (17 3/8 inches)
D 264mm (10 1/2 inches)

Dimensions without stand
W 470mm (18 5/8 inches)
H 394mm (15 5/8 inches)
D 87mm (3 1/2 inches)

8.7 kg (19 lb 3 oz)
 (with stand)
 7.0 kg (15 lb 7 oz)
 (without stand)

84 W (Max.)

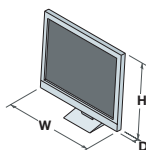
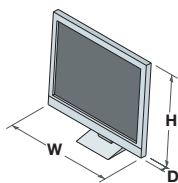
LMD-1410

Dimensions with stand
W 343mm (13 5/8 inches)
H 354mm (14 inches)
D 264mm (10 1/2 inches)

Dimensions without stand
W 343mm (13 5/8 inches)
H 304mm (12 inches)
D 87mm (3 1/2 inches)

6.5 kg (14 lb 5 oz)
 (with stand)
 4.8 kg (10 lb 9 oz)
 (without stand)

48 W (Max.)



SECURITY COMPLIANCE

UL-6500, CSA-E60065, EN 60065, EN-55103, VCCI-A, FCC-A, IC-A, C-Tick, CE (LVD, EMC), JEIDA, CCC

LMD-2020 LMD-1420

14 AND 20 INCH LCD MONITORS

Utilising the latest fast-responding LCD panels these monitors offer pictures with high brightness and contrast and a wide (170-degree) viewing angle.

- ▶ Blue-only mode & three-colour tally
- ▶ High quality picture processing
- ▶ Parallel remote control & External Sync

Features

- a-Si TFT Active Matrix LCD with an AR-coated protection panel
- VGA Resolution 640 x 480 dots
- Input Versatility - SD inputs from analogue composite and Y/C (S-Video) to analogue component and RGB. Digital SD-SDI inputs
- VGA type LCD panels provides high-brightness and high contrast images with natural colour reproduction
- Wide viewing angle of 170 degrees
- VESA mounting standard

LMD-2020

Dimensions with stand
W 470mm (18 5/8 inches)
H 441mm (17 3/8 inches)
D 264mm (10 1/2 inches)

Dimensions without stand
W 470mm (18 5/8 inches)
H 394mm (15 5/8 inches)
D 87mm (3 1/2 inches)

9.2 kg (20 lb 5 oz)
 (with stand)
 7.5 kg (16 lb 9 oz)
 (without stand)

87 W (Max.)

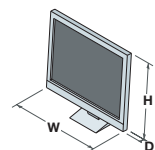
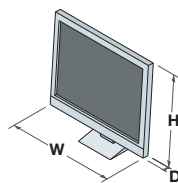
LMD-1420

Dimensions with stand
W 343mm (13 5/8 inches)
H 354mm (14 inches)
D 264mm (10 1/2 inches)

Dimensions without stand
W 343mm (13 5/8 inches)
H 304mm (12 inches)
D 87mm (3 1/2 inches)

6.8 kg (14 lb 16 oz)
 (with stand)
 5.1 kg (11 lb 4 oz)
 (without stand)

51 W (Max.)



SECURITY COMPLIANCE

UL-6500, CSA-E60065, EN 60065, EN-55103, VCCI-A, FCC-A, IC-A, C-Tick, CE (LVD, EMC), JEIDA, CCC



LMD-9050

8.4 INCH LCD MONITOR

A one-piece style monitor for HD/SD multi-format capability. It can be AC, DC, or battery-driven so that it can be hand-held, situated on a desk, or mounted in standard racks.

- ▶ Compact and energy-saving design
- ▶ Parallel remote control
- ▶ Superb picture reproduction

LMD-9030

8.4 INCH LCD MONITOR

A one-piece style monitor for video standard definition. It can be AC, DC, or battery-driven so that it can be hand-held, situated on a desk, or mounted in standard racks.

- ▶ Wide viewing angle
- ▶ Convenient and flexible controls
- ▶ Compact and energy-saving design

Features

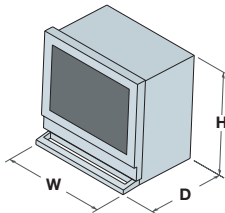
- Resolution XGA 1024 x 768 pixels
- Multi-format video signals. HD/SD-SDI inputs standard
- Versatile analogue video inputs
- AC/DC operation with Li-Ion battery
- Wide viewing angle LCD & Aspect ratio switchable

W 216mm (8 5/8 inches)
H 206mm (8 1/8 inches)
D 136.1mm (5 3/8 inches)

Dimensions with stand
W 216mm (8 5/8 inches)
H 230mm (9 1/8 inches)
D 159.5mm (6 3/8 inches)

Dimensions with stand and AC adaptor
W 216mm (8 5/8 inches)
H 230mm (9 1/8 inches)
D 210mm (8 3/8 inches)

- 3 kg (6 lb 10 oz)
3.2 kg (7 lb 1 oz)
(with stand)
3.9 kg (8 lb 10 oz)
(with stand and AC adaptor)
- 27 W (Monitor)
28 W (With AC Adaptor)



Features

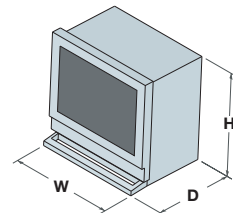
- VGA Resolution 640 x 480 pixels
- SD-SDI video inputs standard
- Versatile analogue video inputs
- AC/DC operation with Li-Ion battery
- Wide viewing angle LCD & Aspect ratio switchable

W 216mm (8 5/8 inches)
H 206mm (8 1/8 inches)
D 136.1mm (5 3/8 inches)

Dimensions with stand
W 216mm (8 5/8 inches)
H 230mm (9 1/8 inches)
D 159.5mm (6 3/8 inches)

Dimensions with stand and AC adaptor
W 216mm (8 5/8 inches)
H 230mm (9 1/8 inches)
D 210mm (8 3/8 inches)

- 3 kg (6 lb 10 oz)
3.2 kg (7 lb 1 oz)
(with stand)
3.9 kg (8 lb 10 oz)
(with stand and AC adaptor)
- 27 W (Monitor)
28 W (With AC Adaptor)



SECURITY COMPLIANCE

UL-60950, CSA-60950, EN 60950, VCCI-A, FCC-A, IC-A, C-Tick, CE (LVD, EMC), JEIDA, CCC, KTL

SECURITY COMPLIANCE

UL-6500, C-UL60065, EN 60950, VCCI-A, FCC-A, IC-A, C-Tick, CE (LVD, EMC), CCC, KTL, RPC



LMD-9020

8.4 INCH LCD MONITOR

With a high-grade LCD panel, this monitor offers a range of interfaces on its rear panel, from analogue composite, Y/C and analogue component. It can also accept High Definition video signals in component analogue format.

- ▶ Superb picture reproduction
- ▶ Excellent brightness and contrast
- ▶ Compact and energy-saving design



FWD-32LX1 FWD-40LX1

FLAT WIDE LCD DISPLAY

These high-resolution LCD displays include Sony unique engine intelligent picture enhancement technology and feature multimedia capability, robust design and multiple video inputs.

- ▶ Superb image quality
- ▶ HD-ready for detailed image display
- ▶ Dual image capability

Training rooms – Telemedicine – Distance Learning


Features

- VGA Resolution 640 x 480 pixels
- Versatile analogue video inputs
- AC/DC operation with Li-Ion battery
- Wide viewing angles LCD & Aspect ratio switchable

W 216mm (8 5/8 inches)
H 206mm (8 1/8 inches)
D 136.1mm (5 3/8 inches)

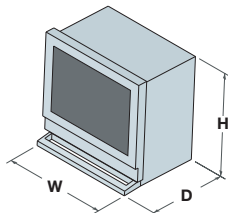
Dimensions with stand
W 216mm (8 5/8 inches)
H 230mm (9 1/8 inches)
D 159.5mm (6 3/8 inches)

Dimensions with stand and AC adaptor
W 216mm (8 5/8 inches)
H 230mm (9 1/8 inches)
D 210mm (8 3/8 inches)

 3 kg (6 lb 10 oz)
 3.2 kg (7 lb 1 oz)

(with stand)
 3.9 kg (8 lb 10 oz)
 (with stand and AC adaptor)

 27 W (Monitor)
 28 W (With AC Adaptor)



Features

- 32-inch/40-inch wide (16:9 format) LCD display
- Native resolution with 1366 x 768 (WXGA) pixels
- Signal acceptance from SD to HD video and from VGA to UXGA PC resolution
- DVI-HDCP input for digital video play-back
- HD input ready (576p/720p/1080i)
- High quality audio with optional speakers
- Wide range of optional interface boards and mounting brackets
- Durable design with anti-scratch protection and smart cabling
- Network options available for dynamic content management
- Available with black or silver bezel

FWD-32LX1 Dimensions


W 802mm
H 492mm
D 107mm

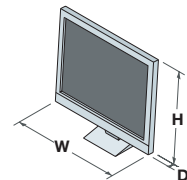
FWD-40LX1 Dimensions

W 994mm
H 597mm
D 125mm

 **FWD-32LX1**
 17.5 kg

FWD-40LX1
 27.5 kg

 220 W (Max.)
 AC100 to 240V,
 50/60Hz



SECURITY COMPLIANCE

UL-6500, C-UL60065, EN 60950, VCCI-A, FCC-A, IC-A, C-Tick, CE (LVD, EMC), CCC, KTL, RPC

SECURITY COMPLIANCE

UL 1950, CSA No.950 (c-UL), CE LVD (EN60950), PSE, FCC Class-B, IC Class-B, VCCI Class-B, CE EMC (EN55022 Class-B, EN55024, EN61000-3-2, EN61000-3-3), C-Tick, CCC, EMKOs



Printing

A Permanent Record

The printed image remains an essential part of modern diagnosis and treatment. Sony has been producing high quality printing products for many years, giving medical practitioners access to the finest possible permanent record of photographs, scans and other captured images.

Our printing technology provides superb colour reproduction and exceptional resistance to fading, assisting accurate and consistent diagnosis. The latest digital imagers offer DICOM-compliant network capability to give immediate connectivity to various modalities and digital images stored across a hospital, trust or an entire region.

With reliability built-in to assure years of trouble-free use in a wide range of medical environments, Sony printers and diagnostic imagers give you a visual record that's as precise as it is permanent.



UP-20

MDD COMPLIANT COLOUR VIDEO PRINTER

Affordable colour printer ideal for the dental market, as well as office or scientific lab applications.

- ▶ A6 Colour
- ▶ Video & S-Video Interface
- ▶ Compact Size

Endoscopy – Microsurgery – Microscopy
Pathology – Ultrasound



UP-21MD

MDD COMPLIANT COLOUR VIDEO PRINTER

The UP-21MD colour video printer requires very little space thanks to its compact design. With a width of only 212mm it is possible to fit it alongside other equipment.

- ▶ A6 Colour
- ▶ RGB, Video & S-Video Interface
- ▶ Compact Size

Endoscopy – Microsurgery – Microscopy
Pathology – Ultrasound

Features

- Photo-realistic quality prints with Sony dye sublimation printing technology
- High-resolution of approximately 400 dpi
- A6 size print in approximately 17 seconds*
- Compact design enables the UP-20 to fit into a limited space and be rack-mounted on a medical cart side by side with other equipment
- Front-loading operation allows easy maintenance and flexible set up
- RS-232C port for remote control operation
- 2 or 4 split print modes
- Four frame memories for fast printing
- Worldwide AC power supply
- Convenient remote control with the optional RM-91/RM-5500 Remote Commander
- UL2601-1 and CSA 601.1 listed
- Complies with the MDD

* Measured in high-speed mode with the UPC-21S Colour Printing Pack (excluding data-transfer time).

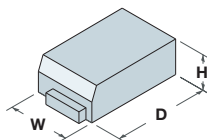
W 212mm (8 3/8 inches)
H 125mm (5 inches)
D 395mm (15 5/8 inches)



6.5 kg (14 lb 5 oz)



100-120 V : 1.8 A
220-240 V : 1.0 A



SECURITY COMPLIANCE
MDD, UL2601-1 and CSA 601.1 listed

SEE ALSO:

UPC-21L | UPC-21S | RM-91 | RM-5500 | FS-20
UPA-21SA

Features

- Resolution of 403 dpi for high picture quality
- Photo-realistic quality prints with Sony dye sublimation printing technology
- A6 size colour print in approx. 17 seconds*
- Easy-to-use colour adjustment function
- Compact design
- 2 or 4 split prints mode
- Four frame memories capability
- Front-loading operation allows easy maintenance and flexible set up
- Accepts and outputs an analogue RGB, S Video (Y/C) or composite video signal
- RS-232C port for remote control operation
- Convenient remote control with the optional RM-91/RM-5500 Remote Commander
- Worldwide AC power supply
- UL2601-1 and CSA 601.1 listed
- Complies with the MDD

* Measured in high-speed mode with the UPC-21S Colour Printing Pack.

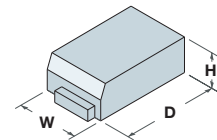
W 212mm (8 3/8 inches)
H 125mm (5 inches)
D 395mm (15 5/8 inches)



6.5 kg (14 lb 5 oz)



100-120 V : 1.8 A
220-240 V : 1.0 A



SECURITY COMPLIANCE
MDD, UL2601-1 and CSA 601.1 listed

SEE ALSO:

UPC-21L | UPC-21S | RM-91 | RM-5500 | FS-20
UPA-21SA



UP-55MD

COLOUR VIDEO PRINTER

Designed for heavy-duty use, offering superb reliability and durability, this colour video printer is ideal for a host of medical applications such as high-end endoscopy and ultrasound systems.

- ▶ A5 Colour
- ▶ Multiple Analogue Interface
- ▶ Ultra-Compact

Endoscopy – Microsurgery – Microscopy
Pathology

Features

- Resolution of 379 dpi for photo-quality prints
- A5 size print in approx. 20 seconds
- Compact size and simple front operation
- Convenient image copy function
- Colour balance adjustment function
- 2, 4, and 8-split image print modes
- Versatile analogue video inputs and outputs
- Wired and wireless remote controls with the optional RM-5500 Remote Commander
- External control via RS-232C interface
- Eight frame memory
- Optional RM-91 Remote Commander for easy printer control
- Complies with UL-60601-1, UL-60950, EN60601-1+EN60601-1-2 (EMC)
- Universal powering system

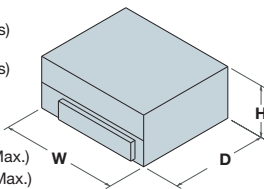
W 280mm (11 ¼ inches)
H 125mm (5 inches)
D 398mm (15 ½ inches)



9 kg (19 lb 13 oz)



100-120 V : 2.8 A (Max.)
220-240 V : 1.2 A (Max.)



SECURITY COMPLIANCE

UL2601-1, CSA C22.2 No.601.1 EN 60950, CSA 601.1

SEE ALSO:

UPC-55 | RM-91 | RM-5500



UP-980CE

MDD COMPLIANT BLACK & WHITE VIDEO GRAPHIC PRINTER

The UP-980CE is ideal for simple picture printing from mobile C-arm or ultrasonic imaging equipment, for time lapse VTR's playback capturing and electron microscope applications.

- ▶ A4 Monochrome
- ▶ Composite Video Interface
- ▶ Paper and Film Print

Dental X-Ray – C-Arm

Features

- Thermal video graphic printer with 256 steps of gray level
- Large print size (EIA standard (NTSC): 188 x 249 mm at side direction print mode, 187 x 140 mm at normal direction print mode, CCIR standard (PAL): 186 x 249 mm at side direction print mode, 187 x 138 mm at normal direction print mode
- High-speed printing of 12 seconds
- Multiple print modes; Standard, Side and 2, 4, 6 split (different images) print
- Accepts both 15.75 kHz video signal and 31.5 kHz high scan signal
- Blue transparency prints with optional UPT-210BL
- Auto paper cut function
- UL2601-1 and CSA 601.1 listed
- Complies with the MDD

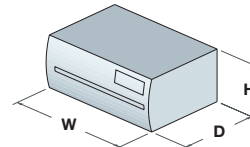
W 316mm (12 ½ inches)
H 132mm (5 ¼ inches)
D 305mm (12 ¼ inches)



8 kg (17 lb 10 oz)



120 V : 2.4 A
220-240 V : 1.3 A



SECURITY COMPLIANCE

MDD, UL2601-1 and CSA 601.1 listed

SEE ALSO:

UPP-210HD | UPP-210SE | UPT-210BL | RM-91 | FS-20



UP-960CE

MDD COMPLIANT BLACK & WHITE VIDEO GRAPHIC PRINTER

Analogue A4 black & white printer for medical, scientific and any other applications which require an A4 black & white documentation.

- ▶ A4 Monochrome
- ▶ Composite Video Interface
- ▶ Paper Print

Dental X-Ray – C-Arm



UP-895MD UP-895CE

MDD COMPLIANT BLACK & WHITE VIDEO GRAPHIC PRINTER

Analogue A6 black & white printer for medical, scientific and any other applications which require an A6 black & white documentation.

- ▶ A6 Monochrome
- ▶ Composite Video Interface
- ▶ Integrator Model (MD),
Distribution Model (CE)

Endoscopy – Microsurgery – Microscopy - Pathology

Features

- Thermal video graphic printer with 256 steps of gray level
- Large print size (EIA standard (NTSC): 184 x 243 mm at side direction print mode, 190 x 144 mm at normal direction print mode, CCIR standard (PAL): 181 x 243 mm at side direction print mode, 190 x 142 mm at normal direction print mode
- High-speed printing of 12 seconds
- Multiple print modes; Standard, Side and 2 split (different images) print
- Accepts worldwide video signals of both EIA and CCIR standard
- UL2601-1 and CSA 601.1 listed
- Complies with the MDD

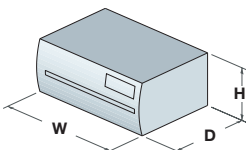
W 316mm (12 1/2 inches)
H 132mm (5 1/4 inches)
D 305mm (12 1/8 inches)



8 kg (17 lb 10 oz)



120 V : 2.4 A
220-240 V : 1.3 A



Features

- High-quality, glossy, near-photographic printing on the UPP-110HG
- 1280 dots thermal head with 256 gradations
- Compact and lightweight design
- Print size: 90 x 68 mm (normal mode, aspect ratio 4:3)
- Hard copy prints in approx. four seconds (aspect ratio 4:3)
- Three width settings, including wide-scan
- 4:3/1:1 aspect ratio selectable
- EIA/CCIR automatic selection
- Auto paper load system for simple operation
- Optional RM-91 Remote Commander for easy printing control
- UL2601-1 and CSA 601.1 listed
- Complies with the MDD

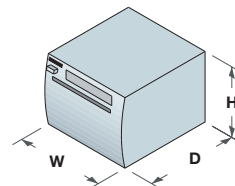
W 154mm (6 1/8 inches)
H 105mm (4 1/4 inches)
D 260mm (10 1/4 inches)



3.4 kg (7 lb 8 oz)



120 W (Max.)



SECURITY COMPLIANCE
MDD, UL2601-1 and CSA 601.1 listed

SEE ALSO:

UPP-210HD | UPP-210SE | RM-91 | FS-20

SECURITY COMPLIANCE
MDD, UL2601-1 and CSA 601.1 listed

SEE ALSO:

UPP-110S | UPP-110HD | UPP-110HG | RM-91 | FS-20



UP-DF500

MDD COMPLIANT DIGITAL FILM IMAGER

The UP-DF500 Digital Film Imager is a compact and high-speed FILM STATION™, designed for use with MRI and CT diagnostic systems.

- ▶ 14"x17" Dry Film Imager
- ▶ DICOM Interface
- ▶ Smallest Footprint

Computed Tomography – Magnetic Resonance
CR/DR



UP-D72XR UP-D72XRS

BLACK & WHITE DIGITAL PRINTER

The Sony UP-D72XR/S provides photo-quality output and has been specifically designed for use with X-ray diagnostic systems, such as mobile C-arm units and dental X-ray systems.

- ▶ 8"x10" Monochrome Printer
- ▶ USB and Parallel Interface
- ▶ Paper and Film Print (UP-D72XR)

Dental X-Ray – C-arm – CR/DR

Features

- Support for 14 x 17 inch Sony Blue Thermal Film
- High resolution of approximately 320 dpi
- Photo-quality prints with Sony direct thermal printing technology
- High-speed printing at a rate of up to 70 sheets of film per hour
- Compact design and small footprint
- Vertical installation capability for saving space
- Quick warm-up time of only a few minutes
- DICOM-compliant network capability
- Ten selectable gamma curves
- Edge-to-edge printing capability
- Worldwide AC power supply
- Incorporates environmentally friendly Sony dry-processing technology
- UL2601-1 and CSA 601.1 listed
- Complies with the MDD

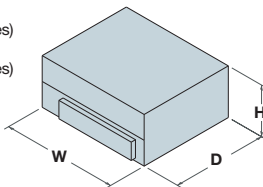
W 600mm (23 5/8 inches)
H 251mm (10 inches)
D 688mm (27 1/8 inches)



55 kg (121 lb 4 oz)



Approx. 4.5 A



Features

- Support for both 8 x 10 inch Blue Thermal Transparent Film and Thermal Print Media (UP-D72XRS supports only Thermal Print media, not film)
- High resolution of approximately 300 dpi
- Photo-quality prints with Sony direct thermal printing technology
- High-speed printing of approximately 45 seconds
- Precise gamma-curve-adjustment capability
- Compact and light weight design
- USB and IEEE 1284 interfaces*
- Front-loading operation allows easy operation and flexible maintenance
- Secure paper-tray lock system
- Equipped with a small window on the paper tray for media-availability checking
- Detachable dust filter
- Worldwide AC power supply
- Incorporates environmentally friendly Sony dry-processing technology
- UL1950, UL2601-1, CSA C22.2 No.950/No.601., EN60950, EN60601-1, EN55022, EN60601-1-2, AS3548 listed

* Supported in ECP (Extended Capabilities Port), Nibble and Compatible modes.

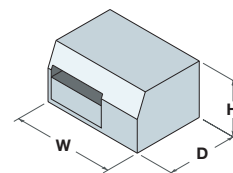
W 412mm (16 1/4 inches)
H 210mm (8 3/8 inches)
D 431mm (17 inches)



15.5 kg (34 lb 3 oz)



270 W (Max.)



SECURITY COMPLIANCE
MDD, UL2601-1 and CSA 601.1 listed

SEE ALSO:
UPT-517BL

SECURITY COMPLIANCE
UL1950, UL2601-1, CSA C22.2 No.950/No.601., EN60950, EN60601-1, EN55022, EN60601-1-2, AS3548 listed

SEE ALSO:
UPT-735BL | UPP-725



UP-D23MD

MDD COMPLIANT DIGITAL COLOUR PRINTER

Compact and lightweight in design, the UP-D23MD is ideal for use in a wide range of medical applications

- ▶ A6 Colour
- ▶ USB 2.0 Interface
- ▶ Compact Size

Endoscopy – Microsurgery – Microscopy – Pathology
Ophthalmology – Ultrasound

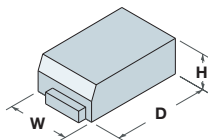
Features

- Resolution of 403 dpi for high picture quality
- Photo-realistic quality prints with Sony dye sublimation printing technology
- A6 size colour print in approximately 19 seconds*1
- Compact design enables it to fit into limited space and to be rack mounted on a medical cart side by side with other equipment
- Front-loading operation allows for easy maintenance and flexible set up
- USB interface (Version 2.0)
- Resize-to-fit feature allows users to enlarge images of VGA (640 x 480 dots), SVGA (800 x 600 dots) and XGA (1024 x 768 dots) to approximately 1,520 x 1,144 dots size image*2 or approximately 2,000 x 1,520 dots size image*3
- Grey balance adjustment capability
- Image spooling function (Two frame memories)
- Worldwide AC power supply
- UL2601-1 and CSA 601.1 listed
- Complies with the MDD

*1 Measured in high-speed mode with the UPC-21S (not including data transfer time).
*2 When using the UPC-21S.
*3 When using the UPC-21L.

W 212mm (8 3/8 inches)
H 125mm (5 inches)
D 395mm (15 5/8 inches)

9 kg (19 lb 5 oz)
100-120 V : 1.8 A
220-240 V : 1.0 A



SECURITY COMPLIANCE
MDD, UL2601-1 and CSA 601.1 listed

SEE ALSO:
UPC-21S | UPC-21L | UPA-21SA



UP-D55

MDD COMPLIANT DIGITAL COLOUR PRINTER

The optimum choice for many medical applications - for example in Endoscopy and Ultrasound systems - and also ideal for a wide range of scientific, industrial, and engineering uses, the UP-D55 provides you with working efficiency for high-performance printing.

- ▶ A5 Colour
- ▶ USB 2.0 Interface
- ▶ Ultra-Compact

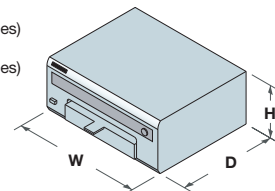
Endoscopy – Microsurgery – Microscopy – Pathology
Ophthalmology – Ultrasound

Features

- Dye sublimation printing for superb print quality at approximately 379 dpi resolution
- A total gradation of 8 bits each for yellow, magenta, and cyan
- A5 size colour prints provided in approx. 20 seconds
- Compact size enabling it to fit into limited space
- Front panel offering easy maintenance and flexible set up
- Equipped with a Hi-Speed USB (USB Rev 2.0) as standard
- A PC utility driver software kit is bundled
- 2, 4 and 8 split image print mode
- Universal powering system
- Colour balance adjustment function
- Image spool function
- Resize function
- Paper tray with a paper stopper
- Complies with the MDD

W 280mm (11 1/8 inches)
H 125mm (5 inches)
D 398mm (15 5/8 inches)

9 kg (19 lb 13 oz)
100-120 V : 2.8 A
220-240 V : 1.2 A



SECURITY COMPLIANCE
MDD

SEE ALSO:
UPC-55



UP-D895 UP-D895MD

MDD COMPLIANT BLACK & WHITE DIGITAL GRAPHIC PRINTER

Digital A6 graphic printer for use with medical and dental modalities and scientific instruments.

- ▶ A6 Monochrome
- ▶ USB Interface
- ▶ Distribution Model (D895)
Integration Model (D895MD)



Endoscopy – Microsurgery – Microscopy – Pathology
Ultrasound – Dental X-ray

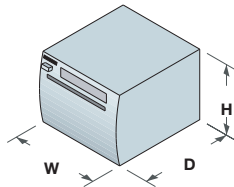
Features

- USB (version. 1.0) and Parallel* (IEEE 1284) interfaces
- Resize-to-fit feature to enlarge images for printing
- Resolution of 325 dpi and 256 steps of grey level for high picture quality
- High-speed printing of approximately 3.8 seconds
- Multiple print modes available for a variety of applications
- 8 MB picture memory for panoramic-size prints
- Compact, space-saving design
- Worldwide AC power supply
- UL2601-1 and CSA 601.1 listed
- Complies with the MDD

*1 Parallel interface is available only for the UP-D895.

W 154mm (6 1/8 inches)
H 105mm (4 1/8 inches)
D 260mm (12 inches)

 3.4 kg (7 lb 8 oz)
 Approx. 120 W
(20 W in stand-by mode)



SECURITY COMPLIANCE
MDD, UL2601-1 and CSA 601.1 listed

SEE ALSO:

UPP-110HG | UPP-110HD | UPP-110S



14 X 17
SIZE

UPT-517BL

BLUE THERMAL FILM

CONTENTS 125 sheets of print film
PAPER SIZE 354 x 430 mm (14 x 17 inches)



8 X 10
SIZE

UPT-735BL

BLUE THERMAL TRANSPARENT FILM

CONTENTS 100 sheets of print film
PAPER SIZE 203 x 254 mm (8 x 10 inches)



8 X 10
SIZE

UPP-725

THERMAL PRINT MEDIA

CONTENTS 100 sheets of print media
PAPER SIZE 203 x 254 mm (8 x 10 inches)



LETTER
SIZE

A4
SIZE

UPT-730BL (A4) UPT-731BL (Letter)

BLUE THERMAL TRANSPARENT FILM

CONTENTS 100 sheets of print film
PAPER SIZE UPT-730BL: 297 x 210 mm
(11 3/4 x 8 3/8 inches)
UPT-731BL: 279 x 216 mm
(11 x 8 5/8 inches)



A5
SIZE

UPC-55

COLOUR PRINTING PACK

CONTENTS 200 sheets of print paper
(100 sheets x 2 packs), 2 rolls of ink ribbon
PAPER SIZE 178 x 152 mm
(7 1/8 x 6 inches)



A5
SIZE

UPC-510

COLOUR PRINTING PACK

CONTENTS 1 roll of ink ribbon
200 sheets of print paper
PAPER SIZE 148 x 210 mm
(5 7/8 x 8 3/8 inches)



A5
SIZE

UPC-540

SELF-LAMINATING COLOUR PRINTING PACK

CONTENTS 1 roll of ink ribbon
102 sheets of print paper
PAPER SIZE 148 x 210 mm
(5 7/8 x 8 3/8 inches)



A6
SIZE

UPC-21S

COLOUR PRINTING PACK

CONTENTS 240 sheets of print paper
3 rolls of ink ribbon
PAPER SIZE 100 x 90 mm (4 x 3 5/8 inches)



A6
SIZE

UPC-21L

COLOUR PRINTING PACK

CONTENTS 200 sheets of print paper
4 rolls of ink ribbon
PAPER SIZE 144 x 100 mm (5 3/4 x 4 inches)



A4
WIDTH

UPT-210BL

BLUE THERMAL TRANSPARENT FILM (TYPE III)

PAPER SIZE 210 mm (W) x 12.5 m
PRINT QUANTITY 42 prints (6-split)



A4
WIDTH

UPP-210HD

THERMAL PRINT MEDIA (TYPE II: HIGH DENSITY)

PAPER SIZE 210 mm (W) x 25m
PRINT QUANTITY 118 prints (with UP-980)
124 prints (with UP-960)



A4
WIDTH

UPP-210SE

THERMAL PRINT MEDIA (TYPE I: HIGH QUALITY)

PAPER SIZE 210 mm (W) x 25 m
PRINT QUANTITY 118 prints (with UP-980)
124 prints (with UP-960)



A6
WIDTH

UPP-110HG

THERMAL PRINT MEDIA (TYPE V: HIGH GLOSSY)

PAPER SIZE 110 mm (W) x 18 m
PRINT QUANTITY 193 prints



A6
WIDTH

UPP-110HD

THERMAL PRINT MEDIA (TYPE II: HIGH DENSITY)

PAPER SIZE 110 mm (W) x 20 m
PRINT QUANTITY 215 prints (with UP-895MD)



A6
WIDTH

UPP-110S

THERMAL PRINT MEDIA (TYPE I: HIGH QUALITY)

PAPER SIZE 110 mm (W) x 20 m
PRINT QUANTITY 215 prints (with UP-895MD)

FS-20

FOOT SWITCH

CONNECTOR Monoaural mini – **CABLE LENGTH** 5 m



RM-91

REMOTE CONTROL UNIT

CONNECTOR Stereo mini – **CABLE LENGTH** 5 m
MASS 80 g (3 oz) – **SUPPLIED ACCESSORY** Operation manual



RM-5500

WIRED/WIRELESS REMOTE COMMANDER

CONNECTOR Special mini – **CABLE LENGTH** 5 m
MASS 200 g (7 oz) – including cable
SUPPLIED ACCESSORY Operation manual



UPA-21SA

SLIDE ADAPTER

SLIDE ADAPTER FOR A MEDICAL CART



Print Media at a Glance

Size	Description	Model	Print sheets/pack		
			UP-DF500		
14 X 17 SIZE	Blue Thermal Film	UPT-517BL	125	•	
			UP-D72XR UP-D72XRS		
8 X 10 SIZE	Blue Thermal Transparent Film	UPT-735BL	100	•	
	Thermal Print Media	UPP-725	100	•	
			UP-D70XR UP-D8800*		
A4 SIZE	Blue Thermal Transparent Film	UPT-730BL/731BL	100	•	
LETTER SIZE	B&W Printing Pack	UPC-8820/8821	100	•	•
	Self-Laminating Colour Printing Pack	UPC-740/741	72	•	
	OHP Transparency Printing Pack	UPC-8830*/8831*	100	•	
	Self-Laminating Colour Printing Pack	UPC-8840*/8840A/8841*/8841A	70	•	
	Colour Printing Pack	UPC-8817	100	•	•
	Self-Laminating Colour Printing Pack	UPC-747	72	•	
			UP-51MD/51MDP* UP-D55 UP-55MD		
A5 SIZE	Colour Printing Pack	UPC-510	200	•	
	Self-Laminating Colour Printing Pack	UPC-540/540MD*	102	•	
	Colour Printing Pack	UPC-55	200	•	•
			UP-20/21MD/D21MD/D23MD		
A6 SIZE	Colour Printing Pack	UPC-21S	240	•	
	Colour Printing Pack	UPC-21L	200	•	
			UP-980/980CE UP-960/960CE UP-930*/910*		
A4 SIZE	Blue Thermal Transparent Film (Type III)	UPT-210BL	12.5 m	•	
	Thermal Print Media (Type II: High Density)	UPP-210HD	25 m	•	•
	Thermal Print Media (Type I: High Quality)	UPP-210SE	25 m	•	•
	Thermal Print Media (Type II: High Density)	UPP-216HD	25 m	•	
	Thermal Print Media (Type I: High Quality)	UPP-216SE	25 m	•	
			UP-895MD/895CE/ D895/D895MD UP-890MD*/ 890CE*/D890* UP-860*/860CE*/ D860*/D860E*		
A6 SIZE	Thermal Print Media (Type V: High Glossy)	UPP-110HG	18 m	•	
	Thermal Print Media (Type IV: Superior Density)	UPP-110HA	18 m	•	
	Thermal Print Media (Type II: High Density)	UPP-110HD	20 m	•	•
	Thermal Print Media (Type I: High Quality)	UPP-110S	20 m	•	•

Foot Switch / Remote Commanders at a Glance

Description	Model				
		UP-7300*/ 7300MDP*	UP-51MD/ 51MDP*	UP-20/21MD/ 2950MD*/2900MD*/ 2850P*/2800P*/ 2300P*/2100*/ 2100P*	UP-980/980CE/ 960/960CE/ 895MD/895CE/ 890MD*/890CE*
Function Foot Switch	FS-30*		0		
Simple Remote Commander	RM-91	0	0	0	0
Multiple Function Remote Commander	RM-5500		0	0	

* Production of these products has been discontinued.

This information has been included to assist customers who are still using these products.

All print quantity numbers are measured in default setting. All non-metric weights and measures are approximate

Print Media at a Glance (for discontinued printers)

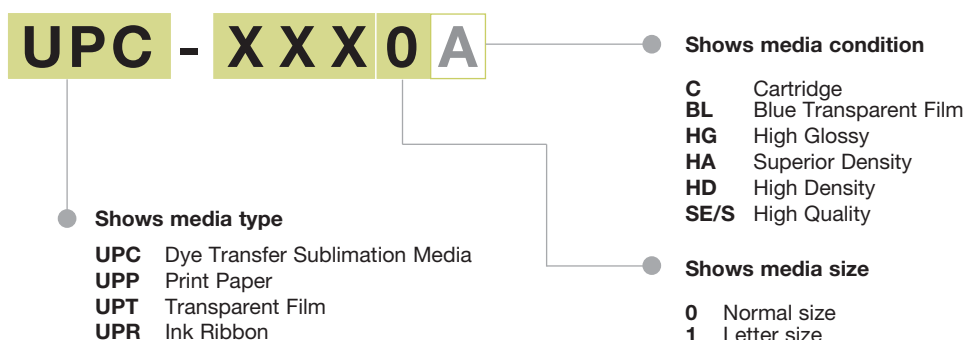
Size	Description	Model	Print sheets/pack						
				UP-7300MD/ 7300MDP/ 7200MD/ 7200MDP/ 7000/7000P/ D7000/D7000E					
A4 SIZE LETTER SIZE	Colour Printing Pack	UPC-7010/7011	100	•					
	B&W Printing Pack	UPC-7020*1 /7020A/ 7021*1 /7021A	100	•					
	OHP Transparent Printing Pack	UPC-7030*1 /7031*1	100	•					
				UP-5600/ 5600MDP	UP-D5500	UP-5000 Series			
A5 SIZE	Colour Printing Pack	UPC-5510	200	•					
	Ink Ribbon Holder for UPC-5510/SUPC-5510	UPA-5500	—	•					
	OHP Transparent Printing Pack	UPC-5530*1	100	•					
	Colour Printing Pack	UPC-5010A	100					•	
	Colour Printing Pack	UPC-5010P	100					•	
	B&W Printing Pack	UPC-5020A	100					•	
					UP-1000 Series	UP-3000 Series	UP-2950MD/ 2900MD/ 2850P/ 2800P/2300	UP-211 UP-2100P	UP-D2600 D2600S/ D2500
A6 SIZE	Colour Printing Pack	UPC-1010	100	•					
	Colour Printing Pack	20UPC-1010*1	2000 (100 prints x 20 packs)	•					
	Colour Printing Pack	UPC-3010	80					•	
	B&W Printing Pack	UPC-1020	100	•					
	B&W Printing Pack	UPC-3020	80					•	
	4-Split Self-Adhesive Stickers Printing Pack	UPC-S04*2	100	•					
	16-Split Self-Adhesive Stickers Printing Pack	UPC-S16*2	100	•					
	16-Split Self-Adhesive Stickers Printing Pack	20UPC-S16*1*2	2000 (100 prints x 20 packs)	•					
	Self-Laminating Colour Printing Pack	5UPC-1040*1	375 (75 prints x 5 packs)	•					
	Colour Printing Pack	UPC-2010	200			•		•	
	B&W Printing Pack	UPC-2020	200			•		•	
	Self-Adhesive Stickers Printing Pack	UPC-20S01*2	200			•		•	
	4-Split Self-Adhesive Stickers Printing Pack	UPC-20S04*2	200			•		•	
	16-Split Self-Adhesive Stickers Printing Pack	UPC-20S16	200			•		•	
	Self-Laminating Colour Printing Pack	UPC-2040A*2	120			•		•	
	Colour Postcard Printing Pack	UPC-2070E*1	150			•		•	

*1 Production of these products has been discontinued.

This information has been included to assist customers who are still using these products.

*2 For details, please consult your nearest Sony office.

How to read print media product code



16:9 mode

This is 33% wider than the standard 4:3 aspect ratio screen and is perfect for HD applications.

Activity Detection

Sends an alarm trigger via the network in response to activity within a camera's field of view.

Adaptive Rate Control

Automatically adjusts picture frame rate for optimum use of available network bandwidth - particularly useful when a camera is connected over an ADSL connection.

Advanced HAD

The Advanced Hole Accumulation Diode (HAD) CCD signal processing system provides brilliant results even in low-light situations. This is possible because it has greater luminance sensitivity and a wider dynamic range which drastically improves the signal to noise ratio.

Alarm

A 'trigger' event detected within a camera's field of view, such as a moving person or object, that can send notification via the network to perform an action such as "start recording".

Anti-reflection (AR)-coated

Sony LMD Series monitors feature an extremely effective anti-reflection coating on the panel surface. This coating contributes to changing the refractive index of ambient light, preventing it from bouncing off the display's surface to the viewer's eye.

ATW Pro

Ideal for frequently changing light conditions and applications where the operator needs to see objects as they appear to the eye.

Automatic Pixel Alignment (APA)

A system that detects mismatch of pixel alignment over the LCD panel and automatically adjusts the alignment through image re-sizing and shift to give optimum picture performance.

Auto Tracing White Balance (ATW)

Adjusts the white balance automatically in response to varying light conditions.

Backlight Compensation (BLC)

Picture brightness is adjusted automatically depending on lighting conditions. BLC overcomes the problem of strong backlight that often causes the subject of the picture to be cast into shadow.

C Mount

A type of camera mount that measures 17.5mm from the lens rear mounting surface to the camera's CCD.

CCD (Charge Coupled Device)

A semiconductor device that can produce an electrical output analogous to the amount of light striking each of its elements. CCD sensors are used in both motion video and still video images.

ChromaTRU

This new technology from Sony allows users to closely match the colour performance between various sizes of LMD Series monitors as well as emulate the colour of SMPTE-C, EBU or ITU-709 standards.

CS Mount

A type of camera mount that measures 12.5mm from the lens rear mounting surface to the camera's CCD. CS mount lenses can be used with C mount cameras by adding a 5mm spacer.

Day/Night Mode

Black and white imaging mode for greater sensitivity in low-light conditions.

DICOM

DICOM stands for Digital Imaging and Communication in Medicine. It is the international standard for the storage and transfer of medical images, both still and moving.

Dots per Inch (dpi)

A measure of the resolution of printers, scanners and monitors. The more dots per inch, the higher the resolution: 600 dpi would mean $600 \times 600 = 360,000$ dots per square inch.

Dry Processing Technology

Method in which an exposed latent image is made visible without chemical treatment.

DSP (Digital Signal Processing)

On-board digital processing of camera images to improve picture quality.

DVD

A worldwide standard of optical disc with the same physical size as CDs, but with 4.7GB capacity (one-side layer). There are several kinds of format available on the market; DVD+RW / DVD-RW / DVD-RAM (re-writable) and DVD+R / DVD-R (write once). Sony's DVO-1000MD adopts DVD+RW format which allows easy & quick operation because no "finalisation" process is required.

Dye Sublimation Printing

A printing method whereby a printer heats ribbons containing dye and then diffuses the dyes onto specially coated paper or transparencies. These printers produce continuous-tone images that mimic actual photographs.

DynaLatitude

A feature that enables the capture of images with a very wide dynamic range, or in other words, images with a very high contrast ratio.

Ethernet

The most common standard for network communication used in LANs (Local Area Networks). LAN technology specifies the packet-based transmission of data between computers, servers and other devices. Transmission is typically via a physical cabled connection, in contrast with WLAN technology that is "wire-free".

ExwaveHAD

Sony camera technology that uses a nearly gap-less On-Chip-Lens (OCL) located over each pixel on the CCD. This results in more than twice the sensitivity and 1/50 the smear compared to HyperHAD technology.

Frame Rate (fps=frames per second)

The number of frames in a moving image per second. Higher frame rates provide better image quality, but consume more network bandwidth and storage space.

HD (High Definition)

High Definition or HD technology creates incredible picture quality with around four times more pixels than Standard Definition images (typically used in television broadcasts).

i.LINK (IEEE1394)

An international standard from the Institute of Electrical and Electronics Engineers (IEEE) referring to the cable link between separate pieces of digital audio/visual equipment. Also referred to as Fire Wire.

IP (Internet Protocol)

A set of specifications governing the packet-based exchange of data between computers and other devices over the Internet and other networks. The network and transport protocol used for exchanging data over the Internet.

JPEG (Joint Photographic Expert Group)

The standard for still image compression technology set by the ISO (International Standards Organization) and ITU-T. A commonly used format on the internet and elsewhere for compressing image files.

LAN (Local Area Network)

A group of linked computers or other devices typically including a central server and several connected PCs, normally within a limited area such as an office or group of buildings, in contrast with WANs (Wide Area Networks) that connect geographically dispersed computers via phone lines, microwave or other links. The most common type of LAN is Ethernet.

Mbits/s

Megabits per second=one million data bits, zeroes and ones, per second. This is a measure of how quickly data is transmitted over a communication link.

MemoryStick

Removable storage media that can be used in a wide range of devices. It can be used to store still or moving images and other data.

Minimum Illumination

The smallest amount of light required to record an image, measured in lux.

M-JPEG

A high-quality digital image compression format. It produces a moving image which is made by storing each frame of a moving picture sequence in JPEG compression, then decompressing and displaying each frame at rapid speed to show the moving picture.

MPEG (Motion Picture Experts Group)

International family of standards for compressing and storing images and sound in digital form. MPEG-2 is the digital format approved by the DICOM Standards Committee. MPEG-4 delivers smooth moving images while requiring lower network bandwidth and is particularly useful for streaming over DSL connections.

Network Video Camera

A 'smart' video camera that includes an embedded operating system, server and IP address. Allows users to view live, full motion video from anywhere on a computer network or the Internet via a standard web browser. Unlike webcams, network cameras often include advanced features such as built-in motion detection with notification and the ability to transfer images via an FTP connection to another server.

Pan/Tilt/Zoom

Describes the movement of a video camera head, often under remote control. Pan is horizontal movement from left to right, tilt is up/down motion, while zoom is a change in the camera's field of view from wide angle to close-up.

Pixel

Abbreviated form of "picture element". A pixel is the smallest rectangular unit of a digital image. The image sensor in a CCD chip includes a large number of pixels that convert the input light image to a digital signal. Higher pixel counts produce an image with greater resolution but require more storage space.

Power-over-Ethernet Operation

Electrical power is carried over the same network connection as video, audio and control signals to reduce cabling requirements and installation complexity.

RS-232C

A standard of serial interface for signal input/output which is widely used for the majority of medical equipment such as ultrasound devices. Sony's DVO-1000MD supports the same protocol as that adopted by the Sony SVO-9500MD Medical S-VHS Recorder.

Sensitivity

The amount of light falling on a scene, measured in lux. Higher sensitivity in a network camera denotes its ability to resolve images more clearly in low-light conditions, such as at dusk or night time.

Smear

Refers to vertical streaks appearing above and below a brightly-lit object or light source when viewed on a monitor. Vertical lines on the screen are caused by the leakage of unwanted light onto the vertical shift register of the CCD.

SuperHAD

A technology that achieves high camera sensitivity by optimising the shape of on-chip micro lenses on the CCD in order to minimise the invalid area between micro lenses of each pixel.

TCP/IP (Transmission Control Protocol/ Internet Protocol)

A specification that defines how data can be transmitted in a secure manner between networks. TCP/IP is the most widely-used communications standard and is the basis for the Internet as well as network video solutions.

Thermal Printing

Non-impact printing that uses heat to register an impression on paper. The direct thermal printer prints the image by burning dots onto coated paper as it passes over the heated printhead. Direct thermal printers do not use ribbons.

WAN (Wide Area Network)

A group of linked computers or other devices typically including a central server and several connected PCs, covering a wide area with connection via phone lines, microwave or other links.

X-Algorithm

A Sony technology which is used to display clean interlaced Standard Definition signals on HD-capable Sony LMD Series monitors.

BRC-300P	-----	(A) iv	RealShot Manager	-----	(A)viii
BRC-H700	-----	(A) iv	RM-5500	-----	(E)ix
BZMD-1	-----	(C)v	RM-91	-----	(E)ix
Dicom Satellite Server	-----	(C)vi	SNC-CS50P	-----	(A)vii
DSR-11	-----	(C)v	SNC-RZ25P	-----	(A)vi
DSR-1500AP	-----	(C)iii	SNC-RZ30P	-----	(A)v
DSR-25	-----	(C)iv	SNC-Z20P	-----	(A)vi
DSR-45P	-----	(C)iv	SNT-V704	-----	(A)vii
DSR-50P	-----	(C)iii	SSC-DC80P Series	-----	(A)v
DSR-DR1000AP	-----	(C)ii	UP-20	-----	(E)ii
DVO-1000MD	-----	(C)ii	UP-21MD	-----	(E)ii
DXC-390P	-----	(A)ii	UP-55MD	-----	(E)iii
DXC-990P	-----	(A)ii	UP-895CE	-----	(E)iv
DXC-C33P	-----	(A)iii	UP-895MD	-----	(E)iv
FS-20	-----	(E)ix	UP-960CE	-----	(E)iv
FWD-32LX1	-----	(D)vi	UP-980CE	-----	(E)iii
FWD-40LX1	-----	(D)vi	UP-D23MD	-----	(E)vi
HDC-X300 Series	-----	(A)iii	UP-D55	-----	(E)vii
HNF	-----	(C)vii	UP-D72XR	-----	(E)v
MZ-RS Series	-----	(A)viii	UP-D72XRS	-----	(E)v
LMD-1410	-----	(D)iv	UP-D895	-----	(E)vii
LMD-1420	-----	(D)iv	UP-D895MD	-----	(E)vii
LMD-152	-----	(D)iii	UP-DF500	-----	(E)v
LMD-172W	-----	(D)iii	UPA-21SA	-----	(E)ix
LMD-1950MD	-----	(D)ii	UPC-21L	-----	(E)viii
LMD-2010	-----	(D)iv	UPC-21S	-----	(E)viii
LMD-2020	-----	(D)iv	UPC-510	-----	(E)viii
LMD-212	-----	(D)iii	UPC-540	-----	(E)viii
LMD-2140MD	-----	(D)ii	UPC-55	-----	(E)viii
MD-232W	-----	(D)iii	UPP-110HD	-----	(E)ix
LMD-322W	-----	(D)iii	UPP-110HG	-----	(E)ix
LMD-9020	-----	(D)vi	UPP-110S	-----	(E)ix
LMD-9030	-----	(D)v	UPP-210HD	-----	(E)ix
LMD-9050	-----	(D)v	UPP-210SE	-----	(E)ix
MEU-WX2	-----	(D)iii	UPP-725	-----	(E)viii
PCS-G50P	-----	(B)ii	UPT-210BL	-----	(E)ix
PCS-G70P	-----	(B)ii	UPT-517BL	-----	(E)viii
PCS-TL30P	-----	(B)iii	UPT-730BL	-----	(E)viii
PCS-TL50P	-----	(B)iii	UPT-731BL	-----	(E)viii
			UPT-735BL	-----	(E)viii

SONY

A woman with dark hair is looking upwards with a focused expression. The scene is dimly lit with a strong blue color cast, suggesting a clinical or laboratory environment. The background is out of focus, showing what appears to be a ceiling or overhead structure.

© 2005 Sony Corporation. All rights reserved.

Reproduction in whole or in part without written permission is prohibited. Features and specifications are subject to change without notice. All non-metric weights and measurements are approximate. Sony, AdvancedHAD, ChromaTRU, DVCAM, DynaLatitude, ExwaveHAD, FilmStation, i.LINK, MemoryStick, RealShot Manager, SuperExwaveHAD and X-Algorithm are registered trademarks of Sony Corporation, Japan. All other trademarks are the property of their respective owners.

This catalogue also includes general product models to which the UL 2601-1 and the MDD medical safety regulations are not applied.

CA HEALTHCARE & SCIENTIFIC CATALOGUE 2006/GB- / /2005