

FireStore™

DR-DV5000

Camera Mount DTE Recorder



USER GUIDE ADDENDUM

Version 1.3

FOCUS
enhancements

TABLE OF CONTENTS

IntroductionP1

1.0 New File FormatsP2

 1.1 Pinnacle AVIP2

2.0 Stop Output SettingsP2

3.0 Format Disk UpdateP3

INTRODUCTION

This User Guide addendum describes functionality of FireStore DR-DV5000 units that have firmware version 1.3 or above. This addendum is to be used in conjunction with the DR-DV5000 version 1.2 User Guide (MANL-0908-03).

In order to determine the version of firmware you are using, navigate to OS VERSION # in the DR-DV5000 SETUP MENU. The version number will display on the DR-DV5000 LCD. If you have an earlier version of firmware and would like to update to version 1.3, it is possible to download the latest version from the FOCUS ENHANCEMENTS support website at: <http://www.focusinfo.com/support>.

If you require further assistance, in the US and Canada contact FOCUS Enhancements technical support at:

www.FOCUSinfo.com

E-mail: support@focusinfo.com

Telephone: 408-370-9963. 8AM – 5PM

Monday to Friday, Pacific time.

(Hint: Mondays tend to be the busiest.)

Fax: 408-866-4859

1.0 NEW FILE FORMATS

1.1 Pinnacle AVI

FireStore DR-DV5000 now includes an additional file format in the REC FORMATS menu, PINNACLE AVI. To navigate to REC FORMATS, select MENU - > REC FORMAT from the DR-DV5000 menu. The following list of formats now appears:

RAW DV	MATROX AVI
AVI TYPE 1	PINNACLE AVI
AVI TYPE 2	QUICKTIME
CANOPUS AVI	AVID OMF

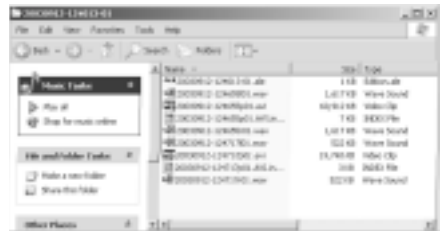
Once you have finished a Pinnacle recording session, do the following:

1. From the FireStore SETUP MENU, select ORGANIZE PINN.
2. You will be asked "ORGANIZE PINNACLE CLIPS? Select YES.
3. It is now possible to remove the disk drive from FireStore to begin editing.

The Pinnacle AVI file format was created for use with products such as Pinnacle Liquid Edition. The Pinnacle AVI file format creates three files simultaneously during a recording; an AVI video file and two separate WAV audio files labeled as left and right. An additional "Edition.ale" file per recording session is also created which contains timecode data. This file must be kept with the media. See below:

When used with Pinnacle applications such as those listed above, it is possible to use the clips directly in the Pinnacle timeline without first having to convert the clips or extract audio from the AVI file. In order to import clips into the Pinnacle application, use the Pinnacle import media files function.

Once clips have been imported into Liquid Edition, an Index file is created on the disk drive per clip. Do not delete this file as it is required to continue work in the particular project. See below:



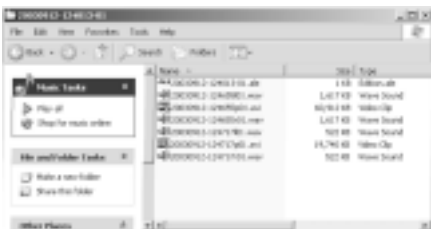
NOTE: For products such as Pinnacle DV500, DV500 Plus and ProONE, use the AVI TYPE 2 file format. For Pinnacle CineWave, use the QUICKTIME file format.

2.0 STOP OUTPUT SETTINGS

The previous CLIP PREVIEW menu item in the SETUP menu has been replaced with the STOP OUTPUT menu. It is now possible to set stop output to one of the following:

CLIP PREVIEW – When CLIP PREVIEW is selected, the camcorder is in VTR mode and the user scrolls from one clip to the next on DR-DV5000 using the index buttons, the first frame of each clip will be generated and showed via the DV output after one second if the user pauses on that clip.

GRAY – When GRAY is selected and DR-DV5000 is in STOP mode, a GRAY splash screen is output via the DV port.

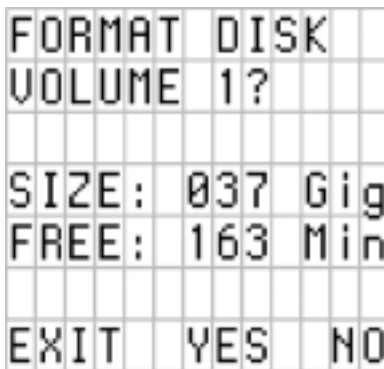


NO OUTPUT – When NO OUTPUT is selected and DR-DV5000 is in STOP mode, there is no signal output via the DV port. For example, if DR-DV5000 is in AV/C CONTROL MODE and is being controlled by a DV device via FireWire such as a DV VTR, it is necessary to use the NO OUTPUT setting.

3.0 FORMAT DISK UPDATE

The format disk function on DR-DV5000 has been enhanced. When multiple disk drives are connected (internal and/or external), it is now possible to select which disk you would like to format. When you select FORMAT from the DR-DV5000 UTILITIES menu, you will be asked to confirm which disk you wish to format. To select between available disk drives, press the forward and backward index buttons on the DR-DV500 front panel (drives are ordered according to when they were formatted. The oldest format will appear as Volume 1).

WARNING: FORMAT ERASES ALL DATA ON THE DISK DRIVE!



Finally, select YES to begin the format process.