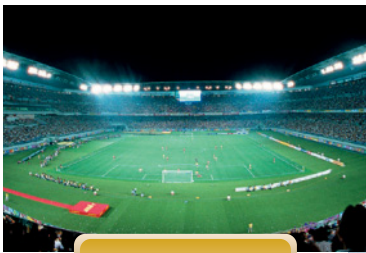
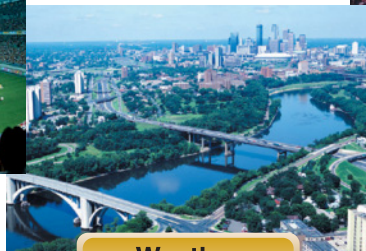


Multi-purpose HD camera featuring high-sensitivity and low-power consumption.



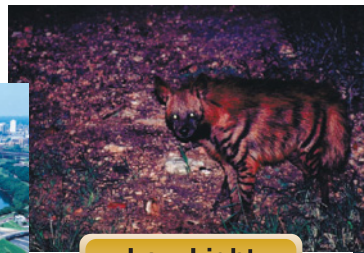
Sports

Easy to mount and operate on a pan-tilt head.



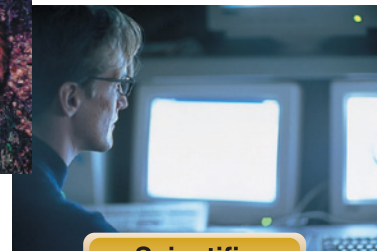
Weather Information

Install in an environmental housing, for an all-weather camera.



Low-Light Environments

High sensitivity provides a minimum required illumination of 0.15 lx*. *at +48 dB gain



Scientific Analysis

Ideal for capturing images for use in computer image analysis.

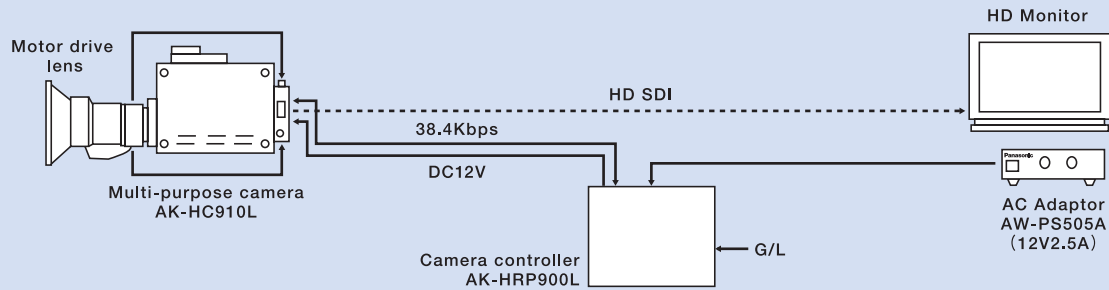
Multi-Purpose Design with an Eye toward the Future

Panasonic introduces the AK-HC910L, featuring an interlace scan 2.2-mega pixels FIT 3-CCD for 1080/50i applications.

- Minimum illumination of 0.15 lx* ensures clear image in low light environments. * at +48 dB gain
- Minimizing environmental impacts through low power consumption and a compact footprint.
- High Definition CCD provides exceptional image quality, sensitivity and minimum smear.

Examples of camera system

Simple remote system



SPECIFICATIONS

CCD	2/3" 2.2-mega pixels FIT 3-CCD	
Image sensing method	GBR Image sensing method	
Total number of pixels	2,010(H)×1,086 (V)	
Effective number of pixels	1,920(H)×1,080 (V)	
Optical prism	F1.4 Prism	
Optical filter	CC	3,200 K, 4,300 K, 6,300 K, Cross
	ND	100 %, 25 %, 6.3 %, 3.2 %
Lens mount	Bayonet type	
Sensitivity	F10 at 2,000 lx	
Minimum illumination	0.15 lx (F1.4/48 dB)	

Gain	0/+9/+18/+30/+42/+48 dB
S/N	54 dB (HD)
Smear	Less than -135 dB
M.T.F.	45 % (27.5 MHz)
Storage temperature	-20 °C ~ +60 °C
Operating temperature	0 °C ~ +40 °C
Power consumption	Approx. 20 W
Dimensions (W×H×D)	110 mm× 125 mm×180 mm
Weight	Approx. 1.8 kg

Panasonic

Matsushita Electric Industrial Co., Ltd.
Panasonic System Solutions Company
Corporate Broadcast and Multimedia Division

4-3-1 Tsunashima-Higashi,
Kohoku-ku, Yokohama City 223-8639, Japan

<http://panasonic.biz/broad/>

[Countries and Regions]

Argentina	+54 1 308 1610	Korea	+82 2 2106 6666	Spain	+34 (93) 425 93 00
Australia	+61 2 9887 6222	Kuwait	+965 481 2123	Sweden	+46 (8) 680 26 41
Austria	+43 (0)1 610 80 773	Lebanon	+961 1 216827	Switzerland	+41 (0)41 259 96 32
Bahrain	+973 252292	Malaysia	+60 3 5549 5422	Taiwan	+886 2 2725 9100
Belgium	+32 (0)2 481 04 57	Mexico	+52 5 488 1000	Thailand	+66 2 731 8888
Bulgaria	+359 2 946 0786	Montenegro, Serbia	+41 (0)26 466 25 20	Turkey	+90 216 578 3700
Brazil	+55 11 3889 4035	Netherlands	+31 73 64 02 577	U.A.E.	+971 4 282201
Canada	+1 905 624 5010	New Zealand	+64 9 272 0100	Ukraine	+380 44 4903437
China	+86 10 6515 8828	Norway	+47 67 91 78 00		+380 44 4903438
(Hong Kong)	+852 2313 0888)	Pakistan	+92 5370320 21		[ext. 112]
Czech Republic	+420 236 032 552/511	Panama	+507 229 2955	U.K.	+44 (0) 1344 70 69 20
Denmark	+45 43 20 08 57	Peru	+51 145 29470	U.S.A.	+1 201 348 5300
Egypt	+20 2 3938151	Philippines	+63 2 633 6162		+1 800 528 8601
Finland, Latvia, Lithuania, Estonia	+358 (9)521 52 53	Poland	+48 (22)338 1100		
France	+33 (0)1 49 46 43 59	Portugal	+351 21 425 77 04		
Germany	+49 (0)611 235 401	Puerto Rico	+1 787 750 4300		
Greece	+30 210 96 92 300	Romania	+40 21 211 4855		
Hungary	+36 (1)382 60 60	Russia & CIS	+7 095 258 42 06		
Indonesia	+62 21 801 5666	Saudi Arabia	+966 1 465 0709		
	+62 21 385 9449	Singapore	+65 6270 0110		
Iran	+98 21 2271463	Slovak Republic	+421 (0)2 52 92 14 23		
Italy	+39 02 67 88 449	Slovenia, Croatia, Bosnia, Macedonia	+44 (0)20 76 63 36 57		
Jordan	+961 6 586 1914	South Africa	+27 11 313 1400		
Kazakhstan	+7 3272 504 777				